

**ANNUAL FALL  
FEMALE SALE**

---

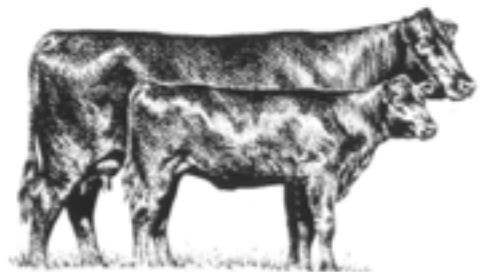
**A\*L\*O\*T  
ANGUS  
ASSOCIATION**

*OCTOBER 10, 2009  
12 P.M*



**OFFERING 70+  
LOTS**

- COW/CALF PAIRS
- BRED COWS & BRED HEIFERS
- OPEN HEIFERS/SHOW PROSPECTS



**QUALITY IN  
BREEDING ANGUS**

<p><b>B A L I</b> Barbara A. Leetun 1243 FM 1242 Abbott, TX 76621 (254) 623-4204 bleetun@hillsboro.net <b>LOTS 1-7</b></p>	<p><b>Crow Angus Farm</b> Roy, Kelley &amp; Robert Crow 1666 CR 1116 Maud, TX 75567 (903) 585-5271 cafangus@yahoo.com <b>LOT 34-36</b></p>
<p><b>Billingsley Angus Farm</b> David L. Billingsly Jr. 3385 Barron Road Keithville, LA 71047 (318) 222-7123 dlbjr1@aol.com Brucellosis Herd Cert. # 98-1913 Last Test Date: 9-24-08 <b>LOTS 8-10</b></p>	<p><b>Diamond B Black Angus</b> Earl Bengston 1287 CR 366 Gainesville, TX 76240 (972) 342-2560 diamondangus@cs.com <b>LOTS 37-43</b></p>
<p><b>Bond Angus Ranch</b> Eugene, Nadine &amp; Mark Bond Rt. 1 Box 218 Marietta, OK 73448 (580) 276-3506 2mbond@gmail.com <b>LOTS 11-20</b></p>	<p><b>JK Angus</b> (Till The Cows Come Home, Inc.) Marty Adler Mngr. Robbie Bean PO Box 941428 Plano, TX 75094 (903) 571-7950 elmcreekangus@yahoo.com <b>LOTS 44-50</b></p>
<p><b>Cooper Cattle Company</b> <b>Macon Cattle Company</b> Clark Cooper, DVM 5257 New Natchitoches Rd West Monroe, LA 71292 (318) 397-0497 cooperdvm@bellsouth.net <b>LOTS 21-27</b></p>	<p><b>Neal Reinig Angus</b> Neal Reinig 1901 Ottinger Rd Roanoke, TX 76262 (817) 937-0916 neal.reinig@gmail.com <b>LOTS 51-52</b></p>
<p><b>Cox Angus Ranch</b> Walter Cox PO Box 38 Naples, TX 75568 (903) 884-3044 coxangusranch@aol.com Brucellosis Herd Cert. # 092129236 Last Test Date: 9-17-08 <b>LOTS 28-33</b></p>	<p><b>Oak Valley Ranch</b> Mike Phinney PO Box 933 Stephenville, TX 76401 (254) 965-5485 phinney2@earthlink.net <b>LOTS 53-55</b></p>

<p><b>R &amp; L Farms</b> Ron &amp; Lynda Northcutt 801 Martin Street Bonham, TX 75418 (903) 583-4801 ron.lyn@randlfarms.com <b>LOTS 56-59</b></p>	<p><b>Summerhill Farm</b> T. E. Wright PO Box 68 Cookville, TX 75558 (903) 572-2337 sumhill@1starnet.com <b>LOTS 66-68</b></p>
<p><b>Sowards Farms</b> Phillip F. Sowards 9487 E 109th PI S Tulsa, OK 74133 (918) 366-9158 p_sowards@hotmail.com <b>LOTS 60-65</b></p>	<p><b>Trinity Farms</b> Aaron Gann 1051 CR 3240 Mt. Pleasant, TX 75455 (903) 305-6476 adgtrinityfarms@yahoo.com <b>LOTS 69-71</b></p>

**DISCOVERED YOUR PRINCE?**

Don't settle for any old frog.



Quality is more than a black hide. Angus cattle earn profits at the sale barn and feedlot. Use high-quality Angus genetics to satisfy consumer demand and your bottom line.

Learn more about raising high-quality Angus cattle at [CABpartners.com](http://CABpartners.com) or call (877) 241-0717.



The brand that pays.™

# A\*L\*O\*T

## ANGUS ASSOCIATION

Saturday, October 10, 2009

12 noon

Titus County Fair Livestock Pavilion ~ Sale Facility  
1800 N. Jefferson Ave.  
Mt. Pleasant, Texas

(1/4 mile south of Interstate 30, Exit 162A,  
behind the Titus County Civic Center)

**Complimentary Lunch Served at 11:30 a.m.**

**Auctioneer: Lakin Oakley, Dekalb, TX  
(903) 277-9610**

### A\*L\*O\*T Association Representatives

Bill Stone, President  
Ernest Shelton, Vice-President  
Learon Roberts, Secretary/Treasurer  
James A. Brown, Director for Arkansas  
Tom Jones, Director for Arkansas  
H. P. Roberts, Director for Louisiana  
Mike Dicks, Director for Oklahoma  
Darrin Marical, Director for Oklahoma  
Ron Northcutt, Director for Texas  
Allen Steen, Director for Texas

### Sale Staff

Bill Stone, (903) 965-4282, bill.stone8@gte.net  
Ernest Shelton, (903) 628-2178, eeshelton@aol.com  
Learon Roberts, (903) 572-1857, roberts@wb4me.com  
Beth Wicker, (903) 667-5581, alot@alotangus.org

### SALE DAY PHONE

(903) 577-8117

### Livestock Publication Representatives

*American Angus Association Regional Manager,*  
Jared Murnin (816) 390-7092  
"Oklahoma Cowman" - Chisolm Kinder, (405) 747-4683  
or Ryan Denton  
"The Cattleman" - Wade Perks (817) 916-1781  
"Weekly Livestock Reporter" - John Andras (817) 789-7352

### Local Accommodations

#### Hampton Inn & Suites

(903) 572-7100  
W. Ferguson Rd.

#### LaQuinta Inn & Suites

(903) 572-5514  
1620 Rotan Ave.

#### Best Western

(903) 577-7378  
102 E. Burton Rd.

#### Holiday Inn Express

(877) 410-6681  
2306 Greenhill Rd.

#### Super 8 Motel

(903) 572-9808  
204 Lakewood Dr.

# Welcome to the A\*L\*O\*T 2009 FALL Female Sale!

ALL CATTLE WILL SELL UNDER THE SUGGESTED TERMS AND  
CONDITIONS OF THE AMERICAN ANGUS ASSOCIATION PRINTED IN  
THE BACK OF THIS CATALOG, pages 40-43!

All EPDs listed in the catalog are current as of Spring 2009.  
Breed Average EPDs and Definitions are listed in the  
back of this catalog, pages 38-39.

A\*L\*O\*T is an agent between the seller and the buyer and is not  
responsible for the guarantee of the animal.

A supplemental sheet will be available sale day with updated  
information. THIS SHEET AND ANY ANNOUNCEMENT FROM THE  
AUCTION BLOCK WILL TAKE PRECEDENCE OVER THE SALE CATALOG.

PLEASE BRING THIS CATALOG TO THE SALE WITH YOU!

BUYERS UNABLE TO ATTEND? Please contact one of the sale staff  
or livestock publication representatives who will handle your bids  
honestly and with careful selection!

HERD HEALTH: All cattle are either from Certified Brucellosis Free  
Herds or have recently tested negative and will be accompanied by  
the proper Health Certificates for immediate shipment across state  
lines!

ALL CATTLE MUST BE PAID FOR BEFORE LOADING OUT UNLESS  
CREDIT IS ARRANGED PRIOR TO THE SALE!  
Load out Sheets must be obtained from office  
PRIOR to load out!

LOAD OUT WILL BE AVAILABLE IMMEDIATELY FOLLOWING THE  
CONCLUSION OF THE SALE!

**CATTLE MUST BE PICKED UP FROM SALE**

**FACILITY BY 6:00 P.M. ON THE DAY OF THE SALE.**

TRUCKING believed to be reliable will be available sale day as well  
as insurance for your purchases upon request.

LIABILITY: All persons who attend the sale do so at their own risk,  
legal or otherwise, for their safety or the behavior of the animals.

Definition of Terms Used  
in A\*L\*O\*T Angus Association Sale Catalog!

**AI** - Artificial Insemination

**PASTURE EXPOSED OR PASTURE BRED** - Cow has been  
exposed in pasture to bull, not guaranteed to be with calf.

**SERVICED** - Cow was inseminated either AI or natural service,  
not guaranteed to be with calf.

**BRED** - Cow was inseminated either AI or natural service, not  
guaranteed to be with calf.

**SAFE IN CALF** - Females have been examined by a veterinarian  
and found to be with calf, and cow is guaranteed to be  
pregnant at time of sale.

**OPEN** - Cow is not pregnant. Guaranteed.

### BREEDER'S REFERENCE GUIDE

Symbols are used with a registration number to denote important information about an animal. An "F" following the symbol for a genetic defect means the animal has tested free of the defect. A "C" following represents a carrier of the defect. (Copied from Angus Journal, September 2009, Volume 31, Number 2, page 32.)

Also, Reference Sires listed in footnotes are followed by their American Angus Registration Number for easy lookup on the website, [www.angus.org](http://www.angus.org).

#	Pathfinder cow or Pathfinder sire
+	Embryo transfer calf
^	Cell Clone
%	Split-ET
@	Clone-ET
AM	Arthrogryposis multiplex
D2	Dwarfism by DNA test
DM	Double muscling
DW	Dwarfism
HG	Horn Gene
HI	Heterochromia irides
NH	Neuropathic hydrocephalus
OS	Osteopetrosis
RD	Red
RTF	Produced 35 or more calves from daughters without a simple recessive genetic defect or genetic factor
SN	Syndactyly
WT	Wild type color gene
XC	Carrier of more than 1 defect
XF	Free of more than 1 defect

Bred Cow

1

#### Falcon Lady 2766

DOB 1/16/06 Cow 15330235 Tattoo 2766

Consigned by B A L I, Abbott, TX

#+Leachman Right Time	#N Bar Emulation EXT AMF-NHF	\$W				
#Hyline Right Time 338 AMF-NHF	Leachman Erica 0025	\$F				
13058662	+Hyline S V F Traveler 0115	+23.53				
Hyline Pride 265	Hyline Pride 870	\$G				
C H Regal 5205	#R R Regal 1459 AMF-NHF	+5.28				
SBR L Lady 1189	Blackcap Effie of C H 227	\$F				
13331455	Minerts Fortune 613	+23.53				
B Bar Lady 1766	#B Bar Highroller Lady 1332	\$G				
		+5.28				
CE	BW	WW	YW	YH	SC	\$QG
+5(.28)	+2.8(.36)	+39(.27)	+80(.26)	I+.2(.05)	I+.64(.05)	+2.56
CEM		Milk	MW	MH	\$EN	\$YG
+4(.18)		+25(.21)	I+15(.05)	I+.5(.05)	+.88	+2.72
		CW	Marb	RE	Fat	\$B
		+14(.12)	-.05(.16)	+.14(.23)	+.019(.16)	+26.62

A productive, young and good looking Right Time daughter Al'd to the Three Trees herd sire RAB-EGL BLUE MOON 4407M, # 14422326 on 3/20/09, and due 12/28/09. The front pasture kind!!

Pair

2

#### Bando Midland 7097

DOB 3/12/07 Cow 15818263 Tattoo 709

Consigned by B A L I, Abbott, TX

#Twin Valley Precision E161 NHC-AMF-RDF	#G A R Precision 1680 AMC-NHC	\$W				
#BR Midland AMF-NHF	+W C C Blackcap C9 RDC	\$F				
13898124	#+S A F Neutron AMF-NHF	+22.03				
BR Royal Lass 7036-19	#+S A F Royal Lass 7036 AMF-NHF	\$G				
+G A R Precision 9296 AMC-NHC	#G A R Precision 1680 AMC-NHC	NA				
RCK 9296 Balnorma 318N	+G A R Max 263	NA				
15058344	#Bon View New Design 878 AMF-NHF	NA				
Eagle 878 Balnorma 3508	#M B Balnorma Bando 3508	NA				
CE	BW	WW	YW	YH	SC	\$QG
I+10(.05)	+1.0(.23)	+43(.24)	+80(.19)	NA	NA	NA
CEM		Milk	MW	MH	\$EN	\$YG
I+8(.05)		+17(.19)	NA	NA	+6.68	NA
		CW	Marb	RE	Fat	\$B
		NA	NA	NA	NA	NA

An excellent phenotypically correct Midland heifer bred to the SUPERSTAR bull GAR New Design 5050, AAA# +13728513 on 12/2/08. Due 9/10/09 with a confirmed bull pregnancy. Potential AM & NH Carrier

Bred Cow

3

#### S E F Lassie BR M 716

DOB 3/15/07 Cow 15797406 Tattoo 716

Consigned by B A L I, Abbott, TX

#Twin Valley Precision E161 NHC-AMF-RDF	#G A R Precision 1680 AMC-NHC	\$W				
#BR Midland AMF-NHF	+W C C Blackcap C9 RDC	\$F				
13898124	#+S A F Neutron AMF-NHF	+12.73				
BR Royal Lass 7036-19	#+S A F Royal Lass 7036 AMF-NHF	\$G				
+Mc Cumber Dakota 9023	#R R Ferdinand 758D AMF-NHF	+26.78				
Diamond Lassie 418	#Miss Wix 365 of Mc Cumber	\$F				
14956763	+Mc Cumber Next Step 9012	+12.73				
Lassie 1118 of Mc Cumber	Lassie 8131 of Mc Cumber	\$G				
		+26.78				
CE	BW	WW	YW	YH	SC	\$QG
I+7(.05)	+1.2(.23)	+35(.24)	+67(.18)	NA	NA	+19.62
CEM		Milk	MW	MH	\$EN	\$YG
I+7(.05)		+14(.18)	NA	NA	+13.18	+7.16
		CW	Marb	RE	Fat	\$B
		-2(.15)	+.35(.18)	+.19(.24)	+.013(.17)	+31.10

Young cow with a very fertile and prolific family, The Diamond Lassie family. Lost her first calf thru no fault of her own. AI BC Matrix 4132, AAA# 14159119 on 4/1/09, PE to DCF Midland N474 6647 4/15 - 5/15/09. Confirmed bull calf at 60 days on 6/10/09.

Ref Sire

**DCF Midland N474 6647**

DOB 9/7/06 Bull +15571478AMF Tattoo 6647  
Owned by Double Creek Farms, Meridian, TX

#BR Midland AMF-NHF  
EXG Midland N474 LS AMF  
14694176  
+G A R 6807 Traveler 2895

#Twin Valley Precision E161 NHC-AMF-RDF  
BR Royal Lass 7036-19  
#D H D Traveler 6807 AMF-NHF  
+G A R Ext 683

Hyline Right Time 338 AMF-NHF  
+Twin Eagles Blackcap 453P AMC  
14915927  
+P A B Blackcap 920 AMC

#+Leachman Right Time  
Hyline Pride 265  
#G A R Precision 1680 AMC-NHC  
+A Plus Blackcap 8102

CED	BW	WW	YW	YH	SC	\$QG
I+8(.05)	I+2.2(.05)	I+46(.05)	I+90(.05)	NA	NA	+18.48
CEM		Milk	MW	MH	\$EN	\$YG
I+7(.05)		I+17(.05)	NA	NA	+3.62	+5.21
		CW	Marb	RE	Fat	\$B
		+15(.11)	+32(.17)	+21(.20)	+0.04(.13)	+47.22

Bred Heifer

4

**DCF Royal Queen 760**

DOB 8/26/07 Cow 15812437 Tattoo 760  
Consigned by B A L I, Abbott, TX

#S S Traveler 6807 T510 AMF  
#S S Objective T510 OT26 AMF-NHF  
13776378  
S S Miss Rita R011 7R8 AMF

#D H D Traveler 6807 AMF-NHF  
#S S Miss Hi Spade A114  
S S Rito Rito R76 R011  
S S Miss Ultress U56

#Connealy Lead On AMF-NHF  
+DCF Royal Queen 5808  
15376643  
Blue Ston Royal Queen 0624

#Connealy Leadtime AMF-NHF  
Eligence Plus of Conanga  
#Summitcrest High Prime OH29 AMF-NHF  
+Blue Ston Royal Queen 1062

CED	BW	WW	YW	YH	SC	\$QG
NA	I+1.4(.05)	I+62(.05)	I+109(.05)	N/A	N/A	+25.05
CEM		Milk	MW	MH	\$EN	\$YG
NA		I+30(.05)	NA	NA	-14.32	+12.72
		CW	Marb	RE	Fat	\$B
		I+11(.05)	I+.52(.05)	I+.46(.05)	I-.042(.05)	+61.55

An OT26 heifer with super growth and a great looker!! Confirmed heifer pregnancy at 60+ days (and healthy) on 6/10/09. Due 1/17/10 to DCF MIDLAND N474 6647, AAA# 15571478, from the great Black cap family. Calf should be super cow!!

Bred Heifer

5

**DCF Lady 7742**

DOB 11/11/07 Cow 15993254 Tattoo 7742  
Consigned by B A L I, Abbott, TX

#B/R New Design 036 AMF-NHF  
#G A R Predestined AMF-NHF  
13395344  
#+G A R Ext 4206

#V D A R New Trend 315 AMF-NHF  
B/R Blackcap Empress 76  
#N Bar Emulation EXT AMF-NHF  
+G A R 6807 Traveler 1432

#Connealy Lead On AMF-NHF  
W R L O Lady 427  
15038514  
M A 9459 of 259 Emulation

#Connealy Leadtime AMF-NHF  
Eligence Plus of Conanga  
#N Bar Emulation EXT AMF-NHF  
M A 259 of 833-2100

CED	BW	WW	YW	YH	SC	\$QG
I+7(.05)	I+2.7(.36)	I+48(.34)	I+93(.05)	NA	NA	+26.38
CEM		Milk	MW	MH	\$EN	\$YG
I+7(.05)		I+25(.26)	NA	NA	-4.54	+7.02
		CW	Marb	RE	Fat	\$B
		I+16(.25)	I+.57(.26)	I+.35(.27)	I+.002(.25)	+58.11

Young bred heifer ranking in the top 10% \$B and top 15% YW, bred to a super young bull, Summitcrest Revolution 765, a Rito Revolution Son. Bred 4/28/09, due February 5, 2010.

Ref Sire

**Summitcrest Revolution 765**

DOB 9/26/07 Bull 15802282 Tattoo 765  
Owned by B A L I, Abbott, TX

#S S Objective T510 OT26 AMF-NHF  
Ideal 4355 of OT26 2440 AMF-NHF  
14779044  
Ideal 2440 of 7407 7275 AMF

#S S Traveler 6807 T510 AMF  
S S Miss Rita R011 7R8 AMF  
+Ideal 7407 of 1418 4465  
+Ideal 7275 of 809 1470

#Diamond Rainmaker 154E AMF-NHF  
Summitcrest Primrose 238N  
14706899  
Summitcrest Primrose 159K

Black Tooth Rainmaker 911  
Basin Blackcap C S 815A  
#Famous 7001 AMF  
Summitcrest Primrose 181B

CED	BW	WW	YW	YH	SC	\$QG
I+8(.05)	I+1.6(.05)	I+52(.05)	I+87(.05)	I+.3(.05)	NA	+30.30
CEM		Milk	MW	MH	\$EN	\$YG
I+9(.05)		I+22(.05)	NA	NA	+17	-1.03
		CW	Marb	RE	Fat	\$B
		I+18(.05)	I+.56(.05)	I+.06(.05)	I+.031(.05)	+49.57

Bred Heifer

6

**BonView Queen Forte-3J15 804**

DOB 2/22/08 Cow 15999048 Tattoo 804  
Consigned by B A L I, Abbott, TX

#S S Objective T510 OT26 AMF-NHF  
Quaker Hill Objective 3J15 AMF-NHF  
14660859  
#Quaker Hill Queen 1L4 AMF

#S S Traveler 6807 T510 AMF  
S S Miss Rita R011 7R8 AMF  
+BW/QHF Blackcap Lad  
Ankony Queen Q H F R981

#Papa Forte 1921  
+LCC Bon View Queen LG970  
14055065  
Bon View Queen M 557

Papa Optima 9818  
Papa Envious Blackbird 8832  
#Bon View Balance 834 AMF-NHF  
Bon View Queen M 2355

CED	BW	WW	YW	YH	SC	\$QG
I+6(.05)	I+1.9(.38)	I+43(.36)	I+90(.05)	I+.2(.05)	NA	+9.61
CEM		Milk	MW	MH	\$EN	\$YG
I+7(.05)		I+28(.15)	NA	NA	-6.25	+8.18
		CW	Marb	RE	Fat	\$B
		I+11(.06)	I+.10(.08)	I+.33(.10)	I-.004(.06)	+38.56

This youngster is deep and full-bodied and has excellent yearling growth. AI'd to Sitz New Design 349M, AAA# 14094252, a low birth, high growth proven sire, on 7/2/09. Due 4/9/10

Open Heifer

7

**Roden Rita 9321**

DOB 1/18/09 Cow +16312510AMF Tattoo 9321  
Consigned by B A L I, Abbott, TX

#B/R New Design 036 AMF-NHF  
#G A R Predestined AMF-NHF  
13395344  
#+G A R Ext 4206

#V D A R New Trend 315 AMF-NHF  
B/R Blackcap Empress 76  
#N Bar Emulation EXT AMF-NHF  
+G A R 6807 Traveler 1432

#G A R Precision 1680 AMC-NHC  
+G A R Precision G153 AMC  
14577483  
G A R Prime Time 2409 AMF-NHF

#Tehama Bando 155 AMF-NHF  
9J9 G A R 856 NHF  
#Gardens Prime Time AMF-NHF  
+G A R Ext 327 AMF

CED	BW	WW	YW	YH	SC	\$QG
I+10(.05)	I+2.2(.05)	I+42(.05)	I+87(.05)	I+.2(.05)	NA	+31.94
CEM		Milk	MW	MH	\$EN	\$YG
I+9(.05)		I+29(.05)	NA	NA	-6.29	+4.59
		CW	Marb	RE	Fat	\$B
		I+21(.05)	I+.83(.05)	I+.45(.05)	I+.027(.05)	+63.72

Sired by the carcass sire Predestined, out of a daughter of the \$420,000 feed efficiency leader, GAR Prime Time 2409. Rita 9321 ranks in the top 2% of non-parent population for Marb & \$B as well as 5% for RE. BW 71#. Tested AMF and NHC.

**Bred Cow**

**DLB Miss Stockman 365 406**

DOB 11/28/03 Cow 14633331 Tattoo 406

Consigned by Billingsley Angus Farm, Keithville, LA

#TC Stockman #++Leachman Prompter AMF-NHF  
 #TC Stockman 365 #T C Jestress 6004  
 11994601 #V D A R New Trend 315 AMF-NHF  
 TC Pride 0014 #TC Pride 8013

#TC Dividend 963 AMF-NHF-RDF	#++Leachman Prompter AMF-NHF	\$W	+28.14
DLB Miss Dividend 022	T C Erica Eileen 6006	\$F	+11.67
13563515	#G D A R Traveler 71 AMF-NHF	\$G	+24.58
D L B Miss Traveler 71 9603	SC Violet Phillina of Cquin	\$B	+38.68

CED	BW	WW	YW	YH	SC	\$QG
+13(.30)	+6(.38)	+38(.28)	+67(.26)	+7(.36)	+53(.22)	+17.10
CEM		Milk	MW	MH	\$EN	\$YG
+13(.21)		+28(.27)	NA	NA	+25	+7.48
		CW	Marb	RE	Fat	\$B
		+8(.05)	+28(.05)	+03(.05)	-028(.05)	+38.68

Outstanding daughter of TC Stockman 365  
 TC Dividend 963 and GDAR Traveler 71 on bottom side  
 Progeny Ratios: BW 3/102, WW 3/108, YW 1/100  
 Bred AI to SAF Directive, calf due 3/7/10

**Bred Cow**

**DLB Miss Traveler 71 515**

DOB 12/8/04 Cow 14954229 Tattoo 515

Consigned by Billingsley Angus Farm, Keithville, LA

#Traveler 1148 G D A R #Q A S Traveler 23-4 AMF-NHF  
 #G D A R Traveler 71 AMF-NHF #Blackcap Forever 485 G D A R  
 10988296 Lavana 355 G D A R  
 G D A R Miss Blackcap 567 #Blackcap Lady 384 G D A R

#Krugerrand of Donamere 490	#C H Stacker 7040	\$W	+28.32
DLB Miss Krugerrand 490 329	Donamere Bachel Beauty 288	\$F	+8.75
14383613	#TC Dividend 963 AMF-NHF-RDF	\$G	+12.36
DLB Miss Dividend 9703	Nsu Traveler 71 21	\$B	+24.20

CED	BW	WW	YW	YH	SC	\$QG
+10(.32)	+7(.38)	+36(.28)	+63(.28)	+5(.38)	+52(.05)	+13.80
CEM		Milk	MW	MH	\$EN	\$YG
+11(.23)		+32(.27)	NA	NA	-2.25	-1.44
		CW	Marb	RE	Fat	\$B
		+6(.20)	+20(.22)	-32(.28)	+011(.22)	+24.20

A top Traveler 71 daughter  
 Retaining 2 daughters in our herd  
 Progeny Ratios: BW 3/99, WW 3/101, YW 2/101  
 Bred to one of our top yearling bulls. A son of Krugerrand Of Donamere 490 out of one of our top pathfinder cows.  
 Calf due 2/3/10

**Ref Sire**

**DLB Krugerrand 490 815**

DOB 12/21/07 Bull 16094085 Tattoo 815

Owned by Billingsley Angus Farm, Keithville, LA

#C H Stacker 7040 #Rito 2100 G D A R  
 #Krugerrand of Donamere 490 Merle of C H 2031  
 11696575 #Ankonian Cornhusker  
 Donamere Bachel Beauty 288 Donamere Bachel Beauty 722

#TC Dividend 963 AMF-NHF-RDF	#++Leachman Prompter AMF-NHF	\$W	+22.00
#DLB Miss Dividend 963 327	T C Erica Eileen 6006	\$F	+21.23
14363773	#G D A R Traveler 71 AMF-NHF	\$G	+15.57
DLB Miss Traveler 71 014	D F Patsy 3228	\$B	+37.26

CED	BW	WW	YW	YH	SC	\$QG
+8(.29)	+2.7(.35)	+40(.26)	+78(.26)	+1.0(.34)	+83(.33)	+10.86
CEM		Milk	MW	MH	\$EN	\$YG
+9(.20)		+24(.21)	NA	NA	+44	+4.71
		CW	Marb	RE	Fat	\$B
		+15(.20)	+13(.23)	+02(.26)	-014(.21)	+37.26

Potential AM & NH Carrier

**Bred Cow**

**DLB Miss Traveler 234D 620**

DOB 12/18/05 Cow 15276322 Tattoo 620

Consigned by Billingsley Angus Farm, Keithville, LA

#Traveler 124 G D A R #Q A S Traveler 23-4 AMF-NHF  
 #+GDAR SVF Traveler 234D AMF-NHF Rachel Rito 813 G D A R  
 12309327 #Baldrige Oscar  
 +G D A R Forever Lady 718 #L T Forever Lady 395 G D A R

#TC Dividend 963 AMF-NHF-RDF	#++Leachman Prompter AMF-NHF	\$W	+22.88
DLB Miss Dividend 9703	T C Erica Eileen 6006	\$F	+11.32
12999357	#G D A R Traveler 71 AMF-NHF	\$G	+19.56
Nsu Traveler 71 21	Scotch Queen of J M F 9107	\$B	+35.38

CED	BW	WW	YW	YH	SC	\$QG
+6(.31)	+3.7(.37)	+39(.27)	+67(.26)	+7(.35)	+32(.05)	+12.49
CEM		Milk	MW	MH	\$EN	\$YG
+4(.23)		+25(.25)	NA	NA	+3.08	+7.07
		CW	Marb	RE	Fat	\$B
		+10(.21)	+17(.23)	+30(.29)	+006(.23)	+35.38

Beautiful Traveler 234D daughter with Dividend and Traveler 71 on bottom  
 Progeny Ratios: BW 2/96, WW 2/96  
 Bred AI to GAR Predestined, calf due 2/1/10

**Ref Sire**

**Bond GAR 5365 ENHANCER 417**

DOB 9/26/04 Bull 15117474 Tattoo 417

Owned by Eugene Bond, Marietta, OK

#Paramont Ambush 2172 AMF-NHF #Bandolier Eston Durness 42B  
 G A R Enhancer 5365 AMF-NHF E W S Miss Burgess 1720  
 12548426 #Emulation N Bar 5522  
 +G A R 5522 Emulation 63 G A R Bando 720

#Bon View New Design 1407 AMF-NHF	#B/R New Design 036 AMF-NHF	\$W	+22.99
+G A R 1407 New Design 392 NHC-AMF	Bon View Pride 664	\$F	+23.53
14222264	#G A R Precision 1680 AMC-NHC	\$G	+29.28
+G A R Precision 1180 AMC	#+G A R Ext 755 AMF	\$B	+46.65

CED	BW	WW	YW	YH	SC	\$QG
+6(.32)	+5(.45)	+39(.32)	+80(.19)	+4(.05)	NA	+25.60
CEM		Milk	MW	MH	\$EN	\$YG
+9(.17)		+17(.20)	NA	NA	+6.68	+3.68
		CW	Marb	RE	Fat	\$B
		+9(.05)	+54(.05)	+14(.05)	+019(.05)	+46.65

Potential NH Carrier

**Ref Sire**

**Bond New Design 704**

DOB 9/2/07 Bull 16084240 Tattoo 704

Owned by Eugene Bond, Marietta, OK

#Bon View New Design 1407 AMF-NHF #B/R New Design 036 AMF-NHF  
 Bond 1407 Design Grade 577 Bon View Pride 664  
 15383453 #G A R Precision 1680 AMC NHC  
 +Bond GAR PRECISION 331 NHC- AMF +G A R Ext 4526 AMF

+G A R New Design 5861	#B/R New Design 036 AMF-NHF	\$W	+22.74
Bond Precision Design 403	+G A R Bando 2	\$F	+20.06
14614374	#G A R Precision 1680 AMC-NHC	\$G	NA
Bon 1680 Precision 004	+G A R Ext 5125	\$B	NA

CED	BW	WW	YW	YH	SC	\$QG
+9(.21)	+2.2(.26)	+38(.16)	+76(.07)	NA	NA	NA
CEM		Milk	MW	MH	\$EN	\$YG
+9(.08)		+24(.10)	NA	NA	+1.59	NA
		CW	Marb	RE	Fat	\$B
		NA	NA	NA	NA	NA

Potential AM & NH Carrier

**Bred Heifer**

**11**

**Bond New Design 722**

DOB 9/29/07 Cow 16084243 Tattoo 722  
Consigned by Bond Angus Ranch, Marietta, OK

#Bon View New Design 1407 AMF-NHF	#B/R New Design 036 AMF-NHF						
Bond 1407 Design Grade 597	Bon View Pride 664						
15383454	#G A R Precision 1680 AMF-NHF						
+Bond GAR PRECISION 375	+G A R Ext 4526 AMF						
Forsythe Legacy	D B C S Legacy						\$W
Lesters ML-14	#Forsythe Lady Ida 4103						+19.72
14944775	#C H 054 Rito 0100						SF
Callans Rito Eisa 3754	+Callan M M Eisa 1023						+13.24
							SG
							NA
CED	BW	WW	YW	YH	SC	SCG	
+5(.20)	+2.3(.30)	+31(.19)	+66(.08)	NA	NA	NA	
CEM		Milk	MW	MH	\$EN	\$YG	
+7(.09)		+21(.11)	NA	NA	+7.32	NA	
		CW	Marb	RE	Fat	\$B	
		NA	NA	NA	NA	NA	

Has a birth weight of 73#. I like this cow.

Potential AM & NH Carrier (Will be tested prior to sale)

**Bred Heifer**

**14**

**Bond New Design 714**

DOB 11/18/07 Cow 16084245 Tattoo 714  
Consigned by Bond Angus Ranch, Marietta, OK

#Bon View New Design 1407 AMF-NHF	#B/R New Design 036 AMF-NHF						
Bond 1407 Design Grade 597	Bon View Pride 664						
15383454	#G A R Precision 1680 AMF-NHF						
+Bond GAR PRECISION 375	+G A R Ext 4526 AMF						
+G A R New Design 5861	#B/R New Design 036 AMF-NHF						\$W
Bond New Design 610	+G A R Bando 2						+22.79
15365505	#N Bar Emulation EXT AMF-NHF						SF
G A R Ext 2466	+G A R Evas R R Traveler 192						+24.94
							SG
							NA
CED	BW	WW	YW	YH	SC	SCG	
+5(.22)	+2.7(.29)	+43(.18)	+83(.08)	NA	NA	NA	
CEM		Milk	MW	MH	\$EN	\$YG	
+7(.09)		+22(.09)	NA	NA	+1.31	NA	
		CW	Marb	RE	Fat	\$B	
		NA	NA	NA	NA	NA	

Has a birth weight of 72#.

Potential AM & NH Carrier (Will be tested prior to sale)

**Bred Heifer**

**12**

**Bond Enhancer 724**

DOB 10/31/07 Cow 16084244 Tattoo 724  
Consigned by Bond Angus Ranch, Marietta, OK

G A R Enhancer 5365 AMF-NHF	#Paramont Ambush 2172 AMF-NHF						
Bond GAR 5365 ENHANCER 417	+G A R 5522 Emulation 63						
15117474	#Bon View New Design 1407 AMF-NHF						
+G A R 1407 New Design 392 NHC-AMF	+G A R Precision 1180 AMC						
+G A R New Design 5861	#B/R New Design 036 AMF-NHF						\$W
Bond New Design 525	+G A R Bando 2						+23.96
15117470	#Bon View Emulation Ext 473 AMF-NHF						SF
+C R Miss EXT 909 ET	+G A R Bando 2004						+23.00
							SG
							NA
CED	BW	WW	YW	YH	SC	SCG	
+3(.22)	+2.2(.31)	+43(.19)	+81(.07)	NA	NA	NA	
CEM		Milk	MW	MH	\$EN	\$YG	
+7(.08)		+20(.09)	NA	NA	+3.72	NA	
		CW	Marb	RE	Fat	\$B	
		NA	NA	NA	NA	NA	

Has a 68# birth weight.

Potential AM & NH Carrier (Will be tested prior to sale)

**Bred Heifer**

**15**

**Bond New Design 715**

DOB 12/1/07 Cow 16084249 Tattoo 715  
Consigned by Bond Angus Ranch, Marietta, OK

#Bon View New Design 1407 AMF-NHF	#B/R New Design 036 AMF-NHF						
Bond 1407 Design Grade 597	Bon View Pride 664						
15383454	#G A R Precision 1680 AMF-NHF						
+Bond GAR PRECISION 375	+G A R Ext 4526 AMF						
+G A R New Design 5861	#B/R New Design 036 AMF-NHF						\$W
Bond New Design 616	+G A R Bando 2						+30.21
15365528	Forsythe Legacy						SF
Lesters ML-34	R L D Queen Ann D13						+32.45
							SG
							NA
CED	BW	WW	YW	YH	SC	SCG	
+5(.22)	+2.3(.29)	+57(.18)	+96(.07)	NA	NA	NA	
CEM		Milk	MW	MH	\$EN	\$YG	
+7(.08)		+26(.09)	NA	NA	-6.41	NA	
		CW	Marb	RE	Fat	\$B	
		NA	NA	NA	NA	NA	

Has a 71# birth weight.

Potential AM & NH Carrier (Will be tested prior to sale)

**Bred Heifer**

**13**

**Bond Enhancer 720**

DOB 11/1/07 Cow 16084237 Tattoo 720  
Consigned by Bond Angus Ranch, Marietta, OK

G A R Enhancer 5365 AMF-NHF	#Paramont Ambush 2172 AMF-NHF						
Bond GAR 5365 ENHANCER 417	+G A R 5522 Emulation 63						
15117474	#Bon View New Design 1407 AMF-NHF						
+G A R 1407 New Design 392 NHC-AMF	+G A R Precision 1180 AMC						
Ui Icid Ext H083	#N Bar Emulation EXT AMF-NHF						\$W
Bond Ext 102	Illini Travel Miss E037						+23.88
14351889	#D H D Traveler 6807 AMF-NHF						SF
+G A R 6807 Traveler 476	+G A R Precision 1103						+25.98
							SG
							+34.28
CED	BW	WW	YW	YH	SC	SCG	
I+5(.05)	I+3.7(.05)	I+48(.05)	I+86(.05)	N/A	N/A	N/A	
CEM		Milk	MW	MH	\$EN	\$YG	
I+5(.05)		I+25(.05)	N/A	N/A	-2.38	+8.10	
		CW	Marb	RE	Fat	\$B	
		I+15(.05)	I+.56(.05)	I+.38(.05)	I-.004(.05)	+56.86	

Has a 73# birth weight. The grand dam, GAR Traveler 476, is my favorite cow.

Potential AM & NH Carrier (Will be tested prior to sale)

**Bred Heifer**

**16**

**Bond Future Direction 782**

DOB 12/30/07 Cow 16377103 Tattoo 782  
Consigned by Bond Angus Ranch, Marietta, OK

#C A Future Direction 5321 AMC-NHC	#G A R Precision 1680 AMC-NHC						
+Bond Future Direction 582	C A Miss Power Fix 308 AMF						
15383449	#B/R New Design 036 AMF-NHF						
+DVAR Blackcap 994 036 2013 NHC-AMF	+D V A R Precision 2104 994 NHC-AMF						
+G A R New Design 5861	#B/R New Design 036 AMF-NHF						\$W
Bond New Design 527	+G A R Bando 2						N/A
15117480	Forsythe Legacy						SF
Lesters ML-11	Shotts Isabella EXT						N/A
							SG
							N/A
CED	BW	WW	YW	YH	SC	SCG	
N/A	I+1.9(.19)	I+42(.16)	N/A	N/A	N/A	N/A	
CEM		Milk	MW	MH	\$EN	\$YG	
N/A		I+26(.05)	N/A	N/A	N/A	NA	
		CW	Marb	RE	Fat	\$B	
		I+10(.05)	I+.47(.05)	I+.23(.05)	I+.023(.05)	N/A	

Has a 63# birth weight.

Potential AM & NH Carrier (Will be tested prior to sale)

Bred Heifer

17

**Bond Future Direction 781**

DOB 1/5/08 Cow 16377101 Tattoo 781  
Consigned by Bond Angus Ranch, Marietta, OK

#C A Future Direction 5321 *AMC-NHC* #G A R Precision 1680 *AMC-NHC*  
+Bond Future Direction 582 C A Miss Power Fix 308 *AMF*  
15383449 #B/R New Design 036 *AMF-NHF*  
+DVAR Blackcap 994 036 2013 *NHC-AMF* +D V A R Precision 2104 994 *NHC-AMF*

+G A R New Design 5861 #B/R New Design 036 *AMF-NHF*  
Bond New Design 530 +G A R Bando 2  
15117482 Forsythe Legacy  
Lesters ML-14 Callans Rito Eisa 3754

CED NA	BW I+16(.19)	WW I+38(.16)	YW NA	YH NA	SC NA	\$QG NA
CEM NA		Milk I+24(.05)	MW NA	MH NA	\$EN NA	\$YG NA
		CW NA	Marb NA	RE NA	Fat NA	\$B NA

Has a 64# birth weight.  
Potential AM & NH Carrier (Will be tested prior to sale)

Bred Heifer

20

**Bond Enhancer 711**

DOB 2/5/08 Cow 16084239 Tattoo 711  
Consigned by Bond Angus Ranch, Marietta, OK

G A R Enhancer 5365 *AMF-NHF* #Paramont Ambush 2172 *AMF-NHF*  
Bond GAR 5365 *ENHANCER* 417 +G A R 5522 Emulation 63  
15117474 #Bon View New Design 1407 *AMF-NHF*  
+G A R 1407 New Design 392 *NHC-AMF* +G A R Precision 1180 *AMC*

Ui Icid Ext H083 #N Bar Emulation EXT *AMF-NHF*  
Bond Ext 302 Illini Travel Miss E037  
14576150 #G A R Precision 1680 *AMC-NHC*  
Bon 1680 Precision 004 +G A R Ext 5125

CED +6(.19)	BW +1.3(.28)	WW +32(.17)	YW +69(.07)	YH NA	SC NA	\$QG NA
CEM +9(.08)		Milk +14(.10)	MW NA	MH NA	\$EN +12.58	\$YG NA
		CW NA	Marb NA	RE NA	Fat NA	\$B NA

Has a 68# birth weight - more GAR genetics.  
Potential AM & NH Carrier (Will be tested prior to sale)

Bred Heifer

18

**Bond Enhancer 713**

DOB 1/17/08 Cow 16084248 Tattoo 713  
Consigned by Bond Angus Ranch, Marietta, OK

G A R Enhancer 5365 *AMF-NHF* #Paramont Ambush 2172 *AMF-NHF*  
Bond GAR 5365 *ENHANCER* 417 +G A R 5522 Emulation 63  
15117474 #Bon View New Design 1407 *AMF-NHF*  
+G A R 1407 New Design 392 *NHC-AMF* +G A R Precision 1180 *AMC*

+G A R New Design 5861 #B/R New Design 036 *AMF-NHF*  
Bond New Design 614 +G A R Bando 2  
15365513 RAB-GAR Load Up 4049J *AMC*  
Bond Load UP 101 +G A R Commitment 1829

CED I+8(.05)	BW I+1.0(.05)	WW I+45(.05)	YW I+85(.05)	YH NA	SC NA	\$QG NA
CEM I+8(.05)		Milk I+18(.05)	MW NA	MH NA	\$EN +4.28	\$YG NA
		CW NA	Marb NA	RE NA	Fat NA	\$B NA

Has a 72# birth weight. Good cow.  
Potential AM & NH Carrier (Will be tested prior to sale)

Bred Cow

21

**Leachman Design 0405**

DOB 10/27/03 Cow 14804726 Tattoo 0405  
Consigned by Cooper Cattle Company/Macon Cattle Company

#B/R New Design 036 *AMF-NHF* #V D A R New Trend 315 *AMF-NHF*  
#Bon View New Design 878 *AMF-NHF* B/R Blackcap Empress 76  
13062750 #Bon View Bando 598 *AMF*  
Bon View Gammer 85 Bon View Gammer 233

#+Whitstone Fly Traveler 3006 *AMF-NHF* #Hoff Hi Flyer S C 7134 *AMF-NHF*  
+T O P Pride 623 #T C Jestress 6004  
12767011 #P S Power Play *RTF*  
#T C Pride 0025 T C Pride 7045

CED +4(.30)	BW +1.7(.37)	WW +40(.28)	YW +71(.21)	YH NA	SC NA	\$QG NA
CEM +7(.23)		Milk +28(.28)	MW NA	MH NA	\$EN -.66	\$YG +2.54
		CW +6(.19)	Marb +17(.21)	RE +02(.26)	Fat +020(.20)	\$B +27.91

Bred cow with 878 genetics on her sire's side and Whitstone on Dam's.

Bred Heifer

19

**Bond Enhancer 710**

DOB 1/31/08 Cow 16084242 Tattoo 710  
Consigned by Bond Angus Ranch, Marietta, OK

G A R Enhancer 5365 *AMF-NHF* #Paramont Ambush 2172 *AMF-NHF*  
Bond GAR 5365 *ENHANCER* 417 +G A R 5522 Emulation 63  
15117474 #Bon View New Design 1407 *AMF-NHF*  
+G A R 1407 New Design 392 *NHC-AMF* +G A R Precision 1180 *AMC*

Forsythe Legacy D B C S Legacy  
Lesters ML-34 #Forsythe Lady Ida 4103  
14944773 #Paramont Ambush 2172 *AMF-NHF*  
R L D Queen Ann D13 Forsythe Queen Ann 3102

CED +1(.19)	BW +2.8(.29)	WW +32(.18)	YW +66(.07)	YH NA	SC NA	\$QG NA
CEM +7(.08)		Milk +17(.11)	MW NA	MH NA	\$EN +10.88	\$YG NA
		CW NA	Marb NA	RE NA	Fat NA	\$B NA

Has a birth weight of 73#. The sire 417 will add length to your cattle.

Potential AM & NH Carrier (Will be tested prior to sale)

Bred Cow

22

**CCC Traveler EXT Precision**

DOB 11/20/06 Cow 15802856AMF Tattoo 6546  
Consigned by Cooper Cattle Company/Macon Cattle Company

#N Bar Emulation EXT *AMF-NHF* #Emulation N Bar 5522  
#B A R Ext Traveler 205 *AMF-NHF* N Bar Primrose 2424  
12452829 #D H D Traveler 6807 *AMF-NHF*  
#B A R Queen Traveler 3015 Magic Queen 963

Leachman Precision EXT 052 *AMF* #G A R Precision 1680 *AMC-NHC*  
Leachman 052 5092 G A R Ext 2786 *AMF*  
14599505 #Q A S Traveler 23-4 *AMF-NHF*  
+R D B 100 MS Jana 5141 V D A R Blackcap 100

CED +12(.28)	BW -.6(.34)	WW +29(.25)	YW +62(.23)	YH NA	SC NA	\$QG NA
CEM +10(.17)		Milk +26(.19)	MW NA	MH NA	\$EN +3.89	\$YG +5.53
		CW +1(.18)	Marb +19(.20)	RE -.06(.26)	Fat -.006(.20)	\$B +25.99

Should be short bred by sale.

**Bred Cow**

**CCC Traveler Unerside**

**23** DOB 12/18/06 Cow 15802861AMF Tattoo 6556  
 Consigned by Cooper Cattle Company/Macon Cattle Company

#N Bar Emulation EXT AMF-NHF	#Emulation N Bar 5522					\$W
#B A R Ext Traveler 205 AMF-NHF	N Bar Primrose 2424					+23.37
12452829	#D H D Traveler 6807 AMF-NHF					\$F
#B A R Queen Traveler 3015	Magic Queen 963					+6.16
						\$G
#G A R Precision 1680 AMC-NHC	#Tehama Bando 155 AMF-NHF					+19.95
+Leachman Miss 1680-5189 AMC	9J9 G A R 856 NHF					\$QG
14868001	#N Bar Emulation EXT AMF-NHF					+11.26
G A R Ext 2786 AMF	+G A R 6807 Traveler 1222					\$F
						+8.69
						\$G
						+10.21
						\$Q
						+8.30
						\$M
						+1.91
						\$B
						+30.99

Should be short bred by sale. Cow is tested AMF.

**Bred Cow**

**Leachman Miss G392-5196**

**24** DOB 1/26/04 Cow 14810254AMF Tattoo 5196  
 Consigned by Cooper Cattle Company/Macon Cattle Company

#Hyline Right Time 338 AMF-NHF	#+Leachman Right Time					\$W
+Hyline Right Time 392	Hyline Pride 265					+26.19
14162536	#+G D A R Oscar 711 AMF-NHF					\$F
+Hyline Pride Effie 6092	#Hyline Pride 669					+28.49
						\$G
Hyline Super X 57	Hyline WMR Super X 502					+10.21
Leachman Miss EXT 4047	Hyline Polly 570					\$Q
14163990	#N Bar Emulation EXT AMF-NHF					+10.21
+G A R Ext 516	+G A R Evas R R Traveler 513					\$Q
						+8.30
						\$M
						+1.91
						\$B
						+30.99

AI'd to 2-878 (AAA# 1400755) within the last 60 days. Cow is tested AMF.

**Bred Cow**

**CCC Rito 2878 Right T 7007**

**25** DOB 1/30/07 Cow 15950012AMF Tattoo 7007  
 Consigned by Cooper Cattle Company/Macon Cattle Company

#Bon View New Design 878 AMF-NHF	#B/R New Design 036 AMF-NHF					\$W
+Rito 2 878 of 2536 BVND 878 AMF-NHF	Bon View Gammer 85					+28.15
14200755	#G A R Precision 1680 AMC-NHC					\$F
G A R Precision 2536 AMC-NHF	+G A R Ext 2104					+18.59
						\$G
+SF Right Time 8139	#+Leachman Right Time					+21.00
Leachman Miss Laura 5127	G A R Pierre 1322					\$Q
14772704	Maples Hi Hand 407B					+15.10
Maples Laura 732D	Maples Laura 325A					\$M
						+5.90
						\$B
						+29.74

Young cow just weaned first calf and bred back AI to Bushwacker on 4/2/09 due to calve on 1/9/10. Genetics from Select Sires 2-878 cow maker sire of cow.

**Bred Heifer**

**CC Blackcap of 338 / 7501**

**26** DOB 9/22/07 Cow 16178367AMF Tattoo 7501  
 Consigned by Cooper Cattle Company/Macon Cattle Company

#G A R Precision 1680 AMC-NHC	#Tehama Bando 155 AMF-NHF					\$W
+L C R Precision 112 NHC-AMF	9J9 G A R 856 NHF					+24.82
14200755	#N Bar Emulation EXT AMF-NHF					\$F
+G A R Ext 2104	#G A R Scotch Cap 867					+26.20
						\$G
#Hyline Right Time 338 AMF-NHF	#+Leachman Right Time					+10.11
Leachman Miss 338-5120	Hyline Pride 265					\$F
14772698	O F F Rito 8E8 7604					+26.20
Maples Pride 3306	Maples Pride 433B					\$G
						+10.11
						\$Q
						+11.67
						\$M
						-1.56
						\$B
						+34.19

Young bred heifer AI'd to Select Sires Bextor on 4/15/09. Due to calve on 1/22/10. Heifer is sired by full brother to 2536 and a 338 Dam. Heifer is tested AMF

**Open Heifer**

**CCC Focus on Cooper 7513**

**27** DOB 10/28/07 Cow +16150764AMF Tattoo 7513  
 Consigned by Cooper Cattle Company/Macon Cattle Company

#S A F Focus of E R AMF-NHF	#S A F Fame AMF-NHF					\$W
Mytty In Focus AMF-NHF-RDF	G D A R Forever Lady 246					+24.67
13880818	#Sitz Alliance 6595 AMF-NHF					\$F
Mytty Countess 906	Baldrige Countess 357					+27.50
						\$G
#G A R Precision 1680 AMC-NHC	#Tehama Bando 155 AMF-NHF					+24.05
+Leachman Miss Precision AMF	9J9 G A R 856 NHF					\$Q
14166222	#N Bar Emulation EXT AMF-NHF					+21.69
G A R Ext 2266 AMF	+G A R 6807 Traveler 1272					\$M
						+2.36
						\$B
						+45.50

Young embryo out of AMF Precision daughter that should make nice flush cow for someone or ready to breed. Daughter of MYTTY In Focus. Tested AMF

**Bred Cow**

**LFF 1407 5057 of 22**

**28** DOB 12/22/05 Cow +15437335AMC Tattoo 5057  
 Consigned by Cox Angus Ranch, Naples, TX

#B/R New Design 036 AMF-NHF	#V D A R New Trend 315 AMF-NHF					\$W
#Bon View New Design 1407 AMF-NHF	B/R Blackcap Empress 76					+24.79
12783540	#+G A R Sleep Easy 1009 AMF-NHF					\$F
Bon View Pride 664	#Bon View Pride 1551					+25.32
						\$G
#G A R Precision 1680 AMC-NHC	#Tehama Bando 155 AMF-NHF					+36.69
+G A R Precision 22 AMC	9J9 G A R 856 NHF					\$Q
14222227	#B/R New Design 036 AMF-NHF					+31.44
+G A R New Design 2100	L B Blackcap Ext 345 AMF					\$M
						+5.25
						\$B
						+57.57

Pasture Exposed 7/1 - 7/31 to DCF Objective 7761 (AAA# 16078744)

Ref Sire

**DCF Objective 7761**

DOB 12/2/07 Bull 16078744NHF Tattoo 7761

Owned by Walter Cox, Naples, TX

#S S Traveled 6807 T510 AMF  
#S S Objective T510 OT26 AMF-NHF  
13776378  
S S Miss Rita R011 7R8 AMF

#D H D Traveled 6807 AMF-NHF  
#S S Miss Hi Spade A114  
S S Rito Rito R76 R011  
S S Miss Ultrass U56

#+G A R Expectation 4915 AMF-NHF  
+G A R Expectation G184 NHF  
14800793  
+G A R New Design 601 AMF

#N Bar Emulation EXT AMF-NHF  
G A R Traveler 2421  
#B/R New Design 036 AMF-NHF  
+G A R Precision 1928

CED	BW	WW	YW	YH	SC	\$QG
+12(.29)	+.5(.33)	+68(.25)	+116(.19)	I+.5(.05)	I-.02(.05)	+24.20
CEM		Milk	MW	MH	\$EN	\$YG
+10(.18)		+31(.20)	I+82(.05)	I+1.0(.05)	+16.57	+8.69
		CW	Marb	RE	Fat	\$B
		+27(.19)	+.49(.23)	+.58(.27)	-.007(.21)	+67.88

\$W	+35.51
\$F	+48.86
\$G	+32.89

Pair

**Cox Royal Queen 6784**

DOB 11/19/06 Cow 15565635NHC Tattoo 6784

Consigned by Cox Angus Ranch, Naples, TX

#Bon View New Design 1407 AMF-NHF  
+G A R Integrity NHC-AMF  
14222612  
G A R Precision 1019 AMC

#B/R New Design 036 AMF-NHF  
Bon View Pride 664  
#G A R Precision 1680 AMC-NHC  
#+G A R Ext 755 AMF

#+B/R New Frontier 095 AMF-NHF  
+Cox Royal Queen P604  
14847270  
+S A F Royal Queen J24

#B/R New Design 036 AMF-NHF  
White Fence Pride H1  
#S A F Focus of E R AMF-NHF  
+S A F Royal Queen 5084

CED	BW	WW	YW	YH	SC	\$QG
+8(.28)	+1.3(.31)	+38(.24)	+74(.23)	NA	NA	+28.20
CEM		Milk	MW	MH	\$EN	\$YG
+9(.19)		+22(.21)	I+12(.05)	I+.6(.05)	+5.21	+7.49
		CW	Marb	RE	Fat	\$B
		+4(.18)	+.64(.21)	+.17(.26)	-.004(.20)	+47.28

\$W	+25.78
\$F	+18.16
\$G	+35.69

PE 4/1-7/31 to DCF Objective 7761 (AAA# 16078744)

Pair

**Cox Blackcap 6771**

DOB 10/5/06 Cow +15480658NHC Tattoo 6771

Consigned by Cox Angus Ranch, Naples, TX

#Bon View New Design 1407 AMF-NHF  
+G A R Integrity NHC-AMF  
14222612  
G A R Precision 1019 AMC

#B/R New Design 036 AMF-NHF  
Bon View Pride 664  
#G A R Precision 1680 AMC-NHC  
#+G A R Ext 755 AMF

#Bon View New Design 878 AMF-NHF  
+A Plus Blackcap 3172  
14617877  
#G A R Scotch Cap 867

#B/R New Design 036 AMF-NHF  
Bon View Gammer 85  
#Scotch Cap AMF-NHF  
Blackcap G A R 51

CED	BW	WW	YW	YH	SC	\$QG
I+9(.05)	I+1.1(.05)	I+36(.05)	I+66(.05)	I-.2(.05)	I+.09(.05)	+24.50
CEM		Milk	MW	MH	\$EN	\$YG
I+7(.05)		I+29(.05)	NA	NA	+4.1	+4.50
		CW	Marb	RE	Fat	\$B
		I-4(.05)	I+.50(.05)	I+.04(.05)	I+.023(.05)	+30.85

\$W	+27.42
\$F	+11.46
\$G	+29.00

PE 5/1-7/31 to DCF Objective 7761 (AAA# 16078744)

Heifer Calf

**Cox Queen 9070**

DOB 1/3/09 Cow 16258417NHF Tattoo 9070

Consigned by Cox Angus Ranch, Naples, TX

#C A Future Direction 5321 AMC-NHC  
R T R Future Direction 6214 NHC-AMF  
15855242  
Clifton Young Lucy 4006

#G A R Precision 1680 AMC-NHC  
C A Miss Power Fix 308 AMF  
#Bon View New Design 1407 AMF-NHF  
Clifton Young Lucy 05

+G A R Integrity NHC-AMF  
Cox Royal Queen 6784 NHC  
15565635  
+Cox Royal Queen P604

Bon View New Design 1407 AMF-NHF  
G A R Precision 1019 AMC  
#+B/R New Frontier 095 AMF-NHF  
+S A F Royal Queen J24

CED	BW	WW	YW	YH	SC	\$QG
I+6(.05)	I+2.1(.05)	I+47(.05)	I+85(.05)	NA	NA	+30.90
CEM		Milk	MW	MH	\$EN	\$YG
I+8(.05)		I+29(.05)	NA	NA	-5.85	+5.49
		CW	Marb	RE	Fat	\$B
		I+14(.05)	I+.77(.05)	I+.29(.05)	I+.013(.05)	+58.20

\$W	+27.44
\$F	+25.38
\$G	+36.39

Bull Calf

**Cox Carcass King 9105**

DOB 3/2/09 Bull 16290173 Tattoo 9105

Consigned by Cox Angus Ranch, Naples, TX

#C A Future Direction 5321 AMC-NHC  
R T R Future Direction 6214 NHC-AMF  
15855242  
Clifton Young Lucy 4006

#G A R Precision 1680 AMC-NHC  
C A Miss Power Fix 308 AMF  
#Bon View New Design 1407 AMF-NHF  
Clifton Young Lucy 05

+G A R Integrity NHC-AMF  
+Cox Blackcap 6771 NHC  
15480658  
+A Plus Blackcap 3172

Bon View New Design 1407 AMF-NHF  
G A R Precision 1019 AMC  
#Bon View New Design 878 AMF-NHF  
#G A R Scotch Cap 867

CED	BW	WW	YW	YH	SC	\$QG
NA	NA	NA	NA	NA	NA	NA
CEM		Milk	MW	MH	\$EN	\$YG
NA		NA	NA	NA	NA	NA
		CW	Marb	RE	Fat	\$B
		NA	NA	NA	NA	NA

\$W	NA
\$F	NA
\$G	NA

Bred Heifer

**Cox Blackcap 7861**

DOB 10/1/07 Cow 15803560AMC Tattoo 7861

Consigned by Cox Angus Ranch, Naples, TX

#G A R Precision 1680 AMC-NHC  
+EXAR Make the Grade 234 AMC-NHC  
14100695  
+Brost Miss Traveler 703

#Tehama Bando 155 AMF-NHF  
9J9 G A R 856 NHF  
#N Bar Emulation EXT AMF-NHF  
+G T Miss Traveler 177

#Bon View New Design 208 AMF-NHF  
Three Trees Blackcap 4395  
14816462  
+Sherrod Blackcap 0003

#B/R New Design 036 AMF-NHF  
#Bon View Erica 443  
#Plowman 1627 of Millbrae SAR AMF-NHF  
+G A R Ext 2114

CED	BW	WW	YW	YH	SC	\$QG
+9(.25)	+1.2(.34)	+47(.25)	+91(.24)	+.6(.31)	I-.03(.05)	+28.95
CEM		Milk	MW	MH	\$EN	\$YG
+7(.12)		+25(.13)	NA	NA	-4.10	+7.30
		CW	Marb	RE	Fat	\$B
		+11(.13)	+.67(.16)	+.37(.23)	+.010(.16)	+56.88

\$W	+26.41
\$F	+31.32
\$G	+36.25

Al'd 1/14/09 to Predestined (AAA# 13395344)

Bred Heifer

32

**TF Blackbird 8112**

DOB 1/20/08 Bull 16055598 Tattoo 8112  
 Consigned by Cox Angus Ranch, Naples, TX

#Rito 616 of 4B20 6807 AMF-NHF #Rito 112 of 2536 Rito 616 AMF-NHF 13793826 G A R Precision 2536 AMC-NHF	#D H D Traveler 6807 AMF-NHF +Rita 4B20 of OFB1 Bando #G A R Precision 1680 AMC-NHC +G A R EXT 2104	\$W +27.58				
#Summitcrest High Prime 0H29 AMF-NHF EXAR Blackbird 4059 AMF 14649431 Blackbird of RR 1737	#Gardens Prime Time AMF-NHF Summitcrest Missie 2F55 E&b 4137 Dominett 855 Blackbird of R R 7414	\$F +25.98				
CED +6(.29)	BW +1.2(.36)	WW +48(.26)	YW +86(.24)	YH +0(.28)	SC I-.24(.05)	\$QG +26.18
CEM +7(.19)		Milk +18(.21)	MW NA	MH NA	\$EN +4.34	\$YG +3.84
		CW +6(.16)	Marb +.56(.20)	RE -.07(.25)	Fat -.001(.19)	\$B +45.23

Pasture Exposed 3/1 - 5/31/09 to DCF Objective 7761 (AAA# 16078744)

Ref Sire

**Cooley Foresight 163S43**

DOB 10/21/06 Bull +15697330 Tattoo W684  
 Owned by Roy G Crow, Maud, TX

#Papa Forte 1921 #+Woodhill Foresight AMF-NHF 13936986 Bon View Gammer 85	Papa Optima 9818 Papa Envious Blackbird 8832 #Bon View Bando 598 AMF Bon View Gammer 233	\$W +24.71				
#Sitz Traveler 8180 AMF-NHF +Wellington Forever Lady 72W2 14143564 +Toebben Forever Lady 102G	#G D A R Traveler 71 AMF-NHF Sitz Everelda Entense 1137 #D H D Traveler 6807 AMF-NHF S V F Forever Lady 57D	\$F +34.41				
CED I+5(.05)	BW I+3.1(.05)	WW I+52(.05)	YW I+96(.05)	YH I+.4(.05)	SC +.56(.37)	\$QG +24.20
CEM I+7(.05)		Milk I+24(.05)	MW N/A	MH N/A	\$EN -4.54	\$YG +3.62
		CW +19(.18)	Marb +.49(.23)	RE +.15(.27)	Fat +.004(.20)	\$B +54.80

Bred Heifer

33

**Cox Forever Lady 8918**

DOB 3/6/08 Cow 15999831NHC Tattoo 8918  
 Consigned by Cox Angus Ranch, Naples, TX

#Twin Valley Precision E161 NHC-AMF-RDF +Cox Precision E161 P583 14766045 +Toebben Rita 2010 AMF	#G A R Precision 1680 AMC-NHC +W C C Blackcap C9 RDC #Bon View New Design 1407 AMF-NHF +Circle A Rita 5H11-6524	\$W +18.23				
#Twin Valley Precision E161 NHC-AMF-RDF +Cox Forever Lady 5631 14915097 +Toebben Forever Lady C007	#G A R Precision 1680 AMC-NHC +W C C Blackcap C9 RDC #A A R New Trend Waldeck Ef Forever Lady 9609	\$F +23.84				
CED +8(.23)	BW +2.4(.31)	WW +33(.21)	YW +78(.18)	YH +.4(.31)	SC NA	\$QG +17.10
CEM +9(.10)		Milk +25(.11)	MW NA	MH NA	\$EN +.06	\$YG +3.23
		CW +19(.11)	Marb +.28(.14)	RE +.22(.20)	Fat +.016(.15)	\$B +45.20

Pasture Exposed 5/1 - 7/31/09 to DCF Objective 7761 (AAA# 16078744)

Pair

35

**No Name Belltora 3063**

DOB 3/26/03 Cow 14459779 Tattoo 3063  
 Consigned by Crow Angus Farm, Maud, TX

#Emulation N Bar 5522 #N Bar Emulation EXT AMF-NHF 10776479 N Bar Primrose 2424	#Emulation 31 DWF-RDF Ankony 8F78 Lass 8F275 #Emulation 31 DWF-RDF Primrose N Bar 9962	\$W +13.06				
#Leachman Saugahatchee 3000C AMF-NHF No Name Emulous Lady 13835842 D F Belltora 6338	#N Bar Emulation EXT AMF-NHF Leachman B C 7100 #Cracker Jack Baros Sa 860 D F Shoshone Lady 0014	\$F +14.07				
CED -1(.31)	BW +4.2(.37)	WW +39(.27)	YW +70(.21)	YH +.4(.24)	SC -.21(.23)	\$QG +5.00
CEM +7(.23)		Milk +20(.27)	MW +91(.35)	MH +1.1(.13)	\$EN +.00	\$YG +3.18
		CW +9(.19)	Marb +0(.21)	RE +.07(.25)	Fat +.016(.20)	\$B +23.58

Bull calf at side by Cooley Foresight 163S43, born 1/1/09. AI'd 3/8/09 to S A V 8180 Traveler 004, reg# #13512009. Pasture Exposed 3/15 - 9/30/09 to Cooley Foresight 163S43, reg# +15697300.

Bred Cow

34

**Sweetheart Eriskay 276**

DOB 1/31/03 Cow 14465715 Tattoo 276  
 Consigned by Crow Angus Farm, Maud, TX

#D H D Traveler 6807 AMF-NHF #Rito 616 of 4B20 6807 AMF-NHF 12530601 +Rita 4B20 of OFB1 Bando	#Q A S Traveler 23-4 AMF-NHF #Bemindful Maid D H D 0807 #Tehama Bando 155 AMF-NHF +Rita OFB1 of 5H11 Fullback	\$W +28.57				
#Papa Durabull 9805 +Horton Eriskay A152 14032094 #Eriskay D H D 6815	#Scotch Cap AMF-NHF #Envious Blackbird D H D 3811 #Cottontail Maternal POWER464 Eriskay D H D 3806	\$F +11.46				
CED +6(.27)	BW +2.2(.32)	WW +36(.25)	YW +66(.23)	YH N/A	SC N/A	\$QG +18.48
CEM +3(.20)		Milk +17(.25)	MW -12(.35)	MH -.2(.13)	\$EN +16.90	\$YG +8.00
		CW +4(.18)	Marb +.32(.21)	RE +.16(.26)	Fat -.010(.20)	\$B +36.77

AI'd 3/8/09 to O C C Juneau 807J, reg# #13627989

Pair

36

**CAF Neutron Maid C513**

DOB 9/27/05 Cow 15366511 Tattoo C513  
 Consigned by Crow Angus Farm, Maud, TX

#S A F Neutron AMF-NHF S A Neutron 377 AMF-NHF 12760345 #S A Queen Susan 102	#V D A R New Trend 315 AMF-NHF S A F Duchess 9029 #+S A F Power Fix AMF-NHF S A Queen Susan 910	\$W +25.42				
#G A R Commitment AMF Butler 8573 of Commitment 13349058 Panther Creek 5736 033	#D H D Traveler 6807 AMF-NHF +G A R Bando 102 #Ideal 033 of 7365 8263 Brewsters Janice 0736	\$F +26.80				
CED I+3(.05)	BW +2.9(.23)	WW +51(.24)	YW +88(.24)	YH +.6(.31)	SC I+.56(.05)	\$QG +8.70
CEM I+7(.05)		Milk +16(.21)	MW i+45(.05)	MH i+45(.05)	\$EN +5.65	\$YG +.21
		CW +22(.18)	Marb +.08(.20)	RE +.15(.25)	Fat +.026(.19)	\$B +36.26

Bull calf at side by GAR Retail Product, born on 3/19/09. Pasture Exposed 3/19 - 9/30/09 to Cooley Foresight 163S43, reg# +15697330.

**Bred Cow**

**DBBA Queen New Design 509**

**37** DOB 5/5/05 Cow +15044544AMF Tattoo 509  
 Consigned by Diamond B Black Angus, Gainesville, TX

#B/R New Design 036 AMF-NHF		#V D A R New Trend 315 AMF-NHF		\$W		
#Bon View New Design 878 AMF-NHF		B/R Blackcap Empress 76		+26.17		
13062750		#Bon View Bando 598 AMF		SF		
Bon View Gammer 85		Bon View Gammer 233		+20.27		
#G D A R Traveler 044 AMF-NHF		#D H D Traveler 6807 AMF-NHF		SG		
+Deer Creek 044 Traveler 502		#G D A R Blackcap Lady 840		+13.62		
13104660		#G A R Precision 1680 AMC-NHC				
Rutledge Erroline D 44 AMF		#Rutledge Erroline 087				
CED	BW	WW	YW	YH	SC	\$QG
+8(.24)	+1.7(.24)	+40(.23)	+77(.21)	+2(.25)	+21(.24)	+7.82
CEM		Milk	MW	MH	\$EN	\$YG
+8(.21)		+25(.27)	1+26(.05)	1+.4(.05)	+1.43	+5.80
		CW	Marb	RE	Fat	\$B
		+6(.20)	+0.06(.22)	+0.08(.27)	-0.01(.21)	+27.60

Good cow, raises good calves. Retaining daughter from last calf. Heifer calf at side by son of Retail Product (14979319), born 8/19/09. BW - 73 lbs.

**Ref Sire**

**Clarks Retail Product 7464**

DOB 2/26/05 Bull 14979319AMF Tattoo 7464  
 Owned by Doug & Carrie Volkman, Gainesville, TX

#G A R Precision 1680 AMC-NHC		#Tehama Bando 155 AMF-NHF		\$W		
#G A R Retail Product AMF-NHF		9J9 G A R 856 NHF		+22.50		
3395329		#N Bar Emulation EXT AMF-NHF		SF		
+G A R Ext 4927		G A R Traveler 641		+28.71		
#+Whitestone Fly Traveler 3006 AMF-NHF		#Hoff Hi Flyer S C 7134 AMF-NHF		SG		
R A R Miss Band 3006 AMF		#T C Jestress 6004		+22.03		
12569469		#TC Influence AMC-NHF				
D F Miss Band 3163		Pine Drive 7C34 of 3382 5P5				
CED	BW	WW	YW	YH	SC	\$QG
+2(.35)	+2.9(.52)	+46(.39)	+88(.32)	+4(.38)	+49(.33)	+13.80
CEM		Milk	MW	MH	\$EN	\$YG
+6(.19)		+20(.21)	NA	NA	+1.58	+8.23
		CW	Marb	RE	Fat	\$B
		+12(.20)	+0.20(.25)	+0.25(.28)	-0.16(.21)	+42.88

**Bred Cow**

**DBBA 878 Black Queen 601**

**38** DOB 4/16/06 Cow 15350222 Tattoo 601  
 Consigned by Diamond B Black Angus, Gainesville, TX

#B/R New Design 036 AMF-NHF		#V D A R New Trend 315 AMF-NHF		\$W		
#Bon View New Design 878 AMF-NHF		B/R Blackcap Empress 76		+23.55		
13062750		#Bon View Bando 598 AMF		SF		
Bon View Gammer 85		Bon View Gammer 233		+20.43		
#D H D Traveler 6807 AMF-NHF		#Q A S Traveler 23-4 AMF-NHF		SG		
Deer Creek 6807 DHD 9823		#Bemindful Maid D H D 0807		+17.65		
14085151		#G A R Precision 1680 AMC-NHC				
Deer Creek Precision 93		P A F Lady Tridge 4163				
CED	BW	WW	YW	YH	SC	\$QG
+10(.29)	+1.2(.34)	+37(.26)	+76(.24)	+2(.32)	1+.01(.05)	+17.41
CEM		Milk	MW	MH	\$EN	\$YG
+10(.20)		+22(.24)	NA	NA	+3.61	+24
		CW	Marb	RE	Fat	\$B
		+9(.20)	+0.29(.23)	-0.02(.28)	+0.028(.22)	+34.27

Nice young cow. Bred for second calf to son of Retail Product with high RE and Marbling. (14979319)

**Bred Heifer**

**Cooley Foresight 163543**

**39** DOB 3/3/07 Cow 15661091AMF Tattoo 97  
 Consigned by Diamond B Black Angus, Gainesville, TX

#F A R Krugerrand 410H AMF-NHF		#Krugerrand of Donamere 490		\$W		
ALH Krugerrand 825		#F A R Erianna 286F		+21.87		
15121072		RWL&C Yukon Express 1391		SF		
RWL&C Yukon Missy 793		Royal Camilla 1418		+17.13		
A J Focus 820 AMC-NHF		#S A F Focus of E R AMF-NHF		SG		
RWL&C Maggie of Focus 2704		+G A R Precision 3016 AMC		14.01		
14901250		General Magnum 854				
Erroline Maggie 1487		International Erroline 2545				
CED	BW	WW	YW	YH	SC	\$QG
1-1(.05)	+3.7(.16)	+46(.20)	+76(.12)	NA	NA	+8.30
CEM		Milk	MW	MH	\$EN	\$YG
1+2(.05)		+12(.10)	NA	NA	+12.18	+5.71
		CW	Marb	RE	Fat	\$B
		+16(.06)	+0.07(.10)	+0.08(.15)	-0.18(.10)	+35.65

Nice heifer. This will be first calf. Bred to son of Retail Product with high RE and Marbling. (14979319)

**Bred Heifer**

**DBBA Black Queen 801**

**40** DOB 1/2/08 Cow 16049756 Tattoo 801  
 Consigned by Diamond B Black Angus, Gainesville, TX

#G A R Retail Product AMF-NHF		#G A R Precision 1680 AMC-NHC		\$W		
Clarks Retail Product 7464 AMF		+G A R Ext 4927		+21.65		
14979319		#+Whitestone Fly Traveler 3006 AMF-NHF		SF		
R A R Miss Band 3006 AMF		D F Miss Band 3163		+31.15		
#+G A R Grid Maker AMF-NHF		#G D A R Traveler 044 AMF-NHF		SG		
DBBA Black Queen Gridmaker		G A R Precision 2536 AMC-NHF		+19.78		
14539786		#N Bar Emulation EXT AMF-NHF				
+Black Velvet EXT 243		+Deer Creek Traveler 18				
CED	BW	WW	YW	YH	SC	\$QG
1+3(.05)	1+3.5(.05)	1+50(.05)	1+92(.05)	NA	NA	+12.49
CEM		Milk	MW	MH	\$EN	\$YG
1+7(.05)		1+16(.05)	NA	NA	+3.88	+7.29
		CW	Marb	RE	Fat	\$B
		1+9(.05)	1+.17(.05)	1+.21(.05)	1-.005(.05)	+38.71

Super broody heifer will make a great cow. Bred to son of 616. (13958278) Super easy keeping and his calves scan off the charts.

**Ref Sire**

**Black Velvet 9921 of 616**

DOB 10/10/01 Bull 13958278 Tattoo 9921  
 Owned by L N L Farm, Denton, TX

#D H D Traveler 6807 AMF-NHF		#Q A S Traveler 23-4 AMF-NHF		\$W		
#Rito 616 of 4B20 6807 AMF-NHF		#Bemindful Maid D H D 0807		+27.86		
12530601		#Tehama Bando 155 AMF-NHF		SF		
+Rita 4B20 of 0FB1 Bando		+Rita 0FB1 of 5H11 Fullback		+29.16		
#N Bar Emulation EXT AMF-NHF		#Emulation N Bar 5522		SG		
Deer Creek EXT 9921		N Bar Primrose 2424		+20.45		
13398281		#G D A R Traveler 71 AMF-NHF				
+Deer Creek Traveler 18		Lady 6807 Traveler 368				
CED	BW	WW	YW	YH	SC	\$QG
+7(.35)	+1.2(.49)	+50(.39)	+90(.35)	+2(.47)	-25(.42)	+17.10
CEM		Milk	MW	MH	\$EN	\$YG
+7(.19)		.19(.21)	NA	NA	+2.04	+3.35
		CW	Marb	RE	Fat	\$B
		+12(.21)	+0.28(.26)	-0.01(.29)	+0(.23)	+41.42

**Bred Heifer**

**DBBA Black Queen 804**

**41** DOB 4/5/08 Cow 16049759AMF Tattoo 804  
Consigned by Diamond B Black Angus, Gainesville, TX

#G A R Retail Product AMF-NHF  
Clarks Retail Product 7464 AMF  
14979319  
R A R Miss Band 3006 AMF

#G A R Precision 1680 AMC-NHC  
+G A R Ext 4927  
#+Whitestone Fly Traveler 3006 AMF-NHF  
D F Miss Band 3163

#Sitz Alliance 6595 AMF-NHF  
Twin Eagles Elba 112L  
14053629  
Tecc Moneylines Gal 80H

#Tecc Moneylines Gal 80H AMF-NHF  
#Sitz Barbaramere Jet 2698  
#+Krugerrands Moneyline  
C L Windac Elba 4232

						\$W
						+22.89
						\$F
						+24.12
						\$G
						+18.10
CED	BW	WW	YW	YH	SC	\$QG
+10(.21)	+4(.29)	+40(.19)	+81(.18)	+3(.27)	1+.60(.05)	+12.49
CEM		Milk	MW	MH	\$EN	\$YG
+11(.09)		+18(.11)	NA	NA	+5.59	+5.61
		CW	Marb	RE	Fat	\$B
		+7(.10)	+17(.13)	+06(.18)	-003(.13)	+33.85

Nice heifer. Bred to Super 616 son (13958278) that really puts muscle in his calves.

**Bred Heifer**

**DBBA Black Queen**

**42** DOB 4/6/08 Cow 16049760 Tattoo 805  
Consigned by Diamond B Black Angus, Gainesville, TX

#G A R Retail Product AMF-NHF  
Clarks Retail Product 7464 AMF  
14979319  
R A R Miss Band 3006 AMF

#G A R Precision 1680 AMC-NHC  
+G A R Ext 4927  
#+Whitestone Fly Traveler 3006 AMF-NHF  
D F Miss Band 3163

#Bon View New Design 878 AMF-NHF  
+Ddba Queen New Design 505 AMF  
15044123  
+Deer Creek 044 Traveler 502

#B/R New Design 036 AMF-NHF  
Bon View Gammer 85  
#G D A R Traveler 044 AMF-NHF  
Rutledge Erroline D 44 AMF

						\$W
						+19.74
						\$F
						+26.13
						\$G
						+15.97
CED	BW	WW	YW	YH	SC	\$QG
+2(.21)	+4.3(.28)	+45(.19)	+85(.17)	+3(.28)	1+.38(.05)	+9.07
CEM		Milk	MW	MH	\$EN	\$YG
+5(.09)		+20(.11)	NA	NA	+2.59	+6.90
		CW	Marb	RE	Fat	\$B
		+10(.11)	+09(.14)	+21(.19)	-003(.14)	+34.74

Nice heifer. Keeping kind. Bred to son of 616 (13958278) that really throws some super calves.

**Bred Heifer**

**DBBA Black Queen 808**

**43** DOB 4/17/08 Cow 16049762 Tattoo 808  
Consigned by Diamond B Black Angus, Gainesville, TX

#G A R Retail Product AMF-NHF  
Clarks Retail Product 7464 AMF  
14979319  
R A R Miss Band 3006 AMF

#G A R Precision 1680 AMC-NHC  
+G A R Ext 4927  
#+Whitestone Fly Traveler 3006 AMF-NHF  
D F Miss Band 3163

#G D A R Traveler 044 AMF-NHF  
+Deer Creek 044 Traveler 9530  
13143816  
G A R Scotch Cap 2230

#D H D Traveler 6807 AMF-NHF  
#G D A R Blackcap Lady 840  
#Scotch Cap AMF-NHF  
Traveler G A R 105

						\$W
						+19.72
						\$F
						+15.56
						\$G
						+25.08
CED	BW	WW	YW	YH	SC	\$QG
+4(.22)	+4.0(.28)	+40(.19)	+72(.18)	+5(.28)	1+.34(.05)	+15.84
CEM		Milk	MW	MH	\$EN	\$YG
+6(.10)		+17(.12)	NA	NA	+9.00	+9.24
		CW	Marb	RE	Fat	\$B
		+3(.11)	+25(.14)	+17(.18)	-020(.14)	+35.17

Will make a super cow! Her dam is one of my best cows. Bred to a super son of 616 (13958278) that his calves scan at the top. Easy keeper. Thick Bull.

**Bred Cow**

**Shamrock Vale GridMaker 3085**

**44** DOB 2/24/03 Cow #14479509 Tattoo 3085  
Consigned by JK Angus, Plano, TX

#G D A R Traveler 044 AMF-NHF  
#+G A R Grid Maker AMF-NHF  
13254554  
G A R Precision 2536 AMC-NHF

#D H D Traveler 6807 AMF-NHF  
#G D A R Blackcap Lady 840  
#G A R Precision 1680 AMC-NHC  
+G A R Ext 2104

#S A F Easy Fortune AMF-NHF  
Shamrock Vale Ezfortune 0105  
13680470  
#Shamrock Vale Westwind 6074

#Minerts Fortune 2000 AMF-NHF  
S A F Royal Queen 9022  
#Westwind Rito 8503 D J H 019 AMF-NHF  
Shamrock Vale Tonto 2088

						\$W
						+30.31
						\$F
						+34.24
						\$G
						+7.56
CED	BW	WW	YW	YH	SC	\$QG
+6(.31)	+2.4(.42)	+55(.31)	+97(.29)	+7(.27)	+72(.23)	+4.03
CEM		Milk	MW	MH	\$EN	\$YG
+8(.23)		+19(.30)	+47(.41)	+9(.55)	+3.18	+3.53
		CW	Marb	RE	Fat	\$B
		+7(.19)	-02(.22)	+01(.28)	+009(.21)	+25.63

Your typical Grid Maker daughter, feminine yet stout and maternal all the way. Holds a calving interval of 362 days on 5 head and a weaning ratio of 105 on 4 head with a yearling ratio of 106 on 3 head. A consistent money maker with 4 calves averaging 665# @ 205 days. She is A.I. bred to ALC Big Eye D09N (14560689), due 3/2/2010. No carrier ancestry for AM or NH.

**Bred Cow**

**Shamrock Vale 814Z 3145**

**45** DOB 4/22/03 Cow #14479606 Tattoo 3145  
Consigned by JK Angus, Plano, TX

#Basin Rainmaker D S 380U  
Basin Rainmaker 814Z AMF  
1424642  
#Basin Pamella 676X

#G D A R Rainmaker 340  
+Shady Lady Rachel 3233  
Basin Rainmaker D S 450U  
Basin Pamella 6806

#B A R Ext Traveler 205 AMF-NHF  
Shamrock Vale BAR EXT 1008  
13918218  
Shamrock Vale Bando 912 9046 AMF

#N Bar Emulation EXT AMF-NHF  
#B A R Queen Traveler 3015  
#Landmark Bando 912 AMF-NHF  
Shamrock Vale 6807-5035

						\$W
						+29.06
						\$F
						+13.09
						\$G
						+17.66
CED	BW	WW	YW	YH	SC	\$QG
+8(.33)	-8(.41)	+34(.30)	+67(.30)	-1(.30)	+11(.26)	+7.38
CEM		Milk	MW	MH	\$EN	\$YG
+8(.23)		+29(.30)	+18(.38)	+4(.53)	+1.72	+10.28
		CW	Marb	RE	Fat	\$B
		+4(.21)	+05(.23)	+38(.29)	-009(.23)	+28.28

Everyone understands the value of Rainmaker daughters. If you need to raise big sound calves with loads of pounds, this cow will get it done. With less than a 13 month calving interval on 5 head and ratios on 4 head of Birth @ 99, Weaning @ 105, and Yearling @ 103 and RE @ 104, she is a profit center in any herd. Bred A.I. to GAR Predestined (13395344), due 3/1/2010. No carrier ancestry for AM or NH.

**Bred Cow**

**Shamrock Vale 208 4002**

**46** DOB 1/2/04 Cow #14775914 Tattoo 4002  
Consigned by JK Angus, Plano, TX

#B/R New Design 036 AMF-NHF  
#Bon View New Design 208 AMF-NHF  
13044574  
#Bon View Erica 443

#V D A R New Trend 315 AMF-NHF  
B/R Blackcap Empress 76  
#N Bar Emulation EXT AMF-NHF  
#Bon View Erica 1380

#B C C Bushwacker 41-93 AMF-NHF  
ShamrockVale Bushwacker 2038  
14214887  
#Shamrock Vale Trav 205 0123

#Paramont Ambush 2172 AMF-NHF  
R C Anita T Bando 918903  
#B A R Ext Traveler 205 AMF-NHF  
#Shamrock Vale Rito 9M9 6082

						\$W
						+34.87
						\$F
						+32.38
						\$G
						+29.38
CED	BW	WW	YW	YH	SC	\$QG
+10(.33)	+0(.41)	+52(.30)	+94(.30)	+6(.25)	+89(.23)	+26.38
CEM		Milk	MW	MH	\$EN	\$YG
+7(.24)		+37(.30)	+40(.35)	+7(.45)	-12.93	+3.00
		CW	Marb	RE	Fat	\$B
		+9(.19)	+57(.22)	+15(.29)	+026(.21)	+48.65

Talk about spread!! 4002 is "0" BW and 94# of YW!! And you get carcass too!! She is top 5% of all current active dams for Marb (+.57) and top 10% SBeef (\$48.65) while maintaining ratios on three head of 109 Weaning, 108 Yearling, 111 %IMF, and 104 RE. Impeccable breeding with New Design 208 on Bushwacker. Safe A.I. to Predestined (13395344), due 3/18/2010. No carrier ancestry for AM or NH.

**Bred Cow**  
**47**

**Shamrock Vale 6595 4038**

DOB 1/13/04 Cow 14773010 Tattoo 4038

Consigned by JK Angus, Plano, TX

#Sitz Traveler 8180 AMF-NHF  
#Sitz Alliance 6595 AMF-NHF  
12310707  
#Sitz Barbaramere Jet 2698

#G D A R Traveler 71 AMF-NHF  
Sitz Everelda Entense 1137  
3 Bar Spike 1766  
#Sitz Baramere Jet 155

#Rito 616 of 4B20 6807 AMF-NHF  
Shamrock Vale Rito 616 1103  
13931221  
#Shamrock Vale Rito 1B1 9170

#D H D Traveler 6807 AMF-NHF  
#Rita 4B20 of OFB1 Bando  
#+Rito 1B1 of 5H11 Bando AMF-NHF  
Shamrock Vale Ambush 7029

						\$W
						+33.50
						SF
						+23.90
						SG
						+18.54
CED	BW	WW	YW	YH	SC	\$QG
+9(.32)	+6(.41)	+38(.30)	+80(.29)	+3(.24)	+47(.23)	+19.90
CEM		Milk	MW	MH	\$EN	\$YG
+9(.24)		+21(.29)	-35(.33)	-4(.43)	+13.33	-1.36
		CW	Marb	RE	Fat	\$B
		+3(.20)	+36(.23)	+01(.29)	+052(.22)	+30.45

Fertility!! My oh my, less than 12 months on 4 head!! You can't make money if they don't bred back and 4038 does. She averaged 582# at 205 days weaning weight on 4 head, with ultrasound ratios of 117 for %IMF and 106 on RE. Bred A.I. to GAR Predestined (13395344), due 3/03/2010. No carrier ancestry for AM or NH.

**Bred Cow**  
**48**

**Shamrock Vale 616 4080**

DOB 1/28/04 Cow 14775937 Tattoo 4080

Consigned by JK Angus, Plano, TX

#D H D Traveler 6807 AMF-NHF  
#Rito 616 of 4B20 6807 AMF-NHF  
12530601  
+Rita 4B20 of OFB1 Bando

#Q A S Traveler 23-4 AMF-NHF  
#Bemindful Maid D H D 0807  
#Tehama Bando 155 AMF-NHF  
+Rita OFB1 of 5H11 Fullback

#Schurrtop Supreme  
Shamrock Vale Supreme 9045  
13401350  
#Shamrock Vale Rito 1B1 6057

#V D A R New Trend 315 AMF-NHF  
Schurrtop Pam 3449  
#Rito 1B1 of 5H11 Bando AMF-NHF  
Shamrock Vale Scotch C 3046

						\$W
						+26.05
						SF
						+20.06
						SG
						+22.33
CED	BW	WW	YW	YH	SC	\$QG
+8(.31)	+1.5(.41)	+38(.30)	+76(.30)	+4(.27)	-02(.05)	+22.33
CEM		Milk	MW	MH	\$EN	\$YG
+5(.25)		+19(.30)	+20(.36)	+6(.45)	+9.16	+6.49
		CW	Marb	RE	Fat	\$B
		+10(.20)	+43(.23)	+23(.29)	+003(.22)	+46.32

616 daughters are in demand today for their calf raising ability and 4080 is one of the really good ones, averaging 645# of wean weight on 3 head @ 205 days. Ratios of birth 100, weaning 103, yearling 104, %IMF 114, and RE 111. She is top 25% of current dams for 8 economic traits tracked by the AAA. An asset to any cowman's herd. Safe A.I. to GAR New Design 5050, (13728513), due 3/4/2010. No carrier ancestry for AM or NH.

**Bred Cow**  
**49**

**Shamrock Vale 208 4092**

DOB 2/3/04 Cow 14775943 Tattoo 4092

Consigned by JK Angus, Plano, TX

#B/R New Design 036 AMF-NHF  
#Bon View New Design 208 AMF-NHF  
13044574  
#Bon View Erica 443

#V D A R New Trend 315 AMF-NHF  
B/R Blackcap Empress 76  
#N Bar Emulation EXT AMF-NHF  
#Bon View Erica 1380

#Rito 616 of 4B20 6807 AMF-NHF  
#Shamrock Vale Rito 616 1064  
13918241  
Shamrock Vale Ambush 6075

#D H D Traveler 6807 AMF-NHF  
+Rita 4B20 of OFB1 Bando  
#Paramont Ambush 2172 AMF-NHF  
#Shamrock Vale N Trend 4106

						\$W
						+24.57
						SF
						+30.93
						SG
						+28.97
CED	BW	WW	YW	YH	SC	\$QG
+7(.32)	+1.3(.41)	+48(.30)	+91(.30)	+3(.27)	+1.06(.24)	+24.79
CEM		Milk	MW	MH	\$EN	\$YG
+5(.24)		+32(.29)	+97(.39)	+1.2(.53)	-14.06	+4.18
		CW	Marb	RE	Fat	\$B
		+8(.19)	+51(.22)	-02(.29)	-001(.22)	+47.09

Calving ease of 1.5# to a 91# spread and New Design 208 on a 616! Can it get much better? Bloodlines always tell the story and 4092 proves the point. A striking female with loads of data. She holds a top 10% ranking in 9 economically important traits among all current dams. You cannot have too many of this kind! Safe to Objective, (13776378) due 3/4/2010. No carrier ancestry for AM or NH.

**Bred Cow**  
**50**

**Shamrock Vale 616 4131**

DOB 3/2/04 Cow 14775951 Tattoo 4131

Consigned by JK Angus, Plano, TX

#D H D Traveler 6807 AMF-NHF  
#Rito 616 of 4B20 6807 AMF-NHF  
12530601  
+Rita 4B20 of OFB1 Bando

#Q A S Traveler 23-4 AMF-NHF  
#Bemindful Maid D H D 0807  
#Tehama Bando 155 AMF-NHF  
+Rita OFB1 of 5H11 Fullback

#Schurrtop Supreme  
Shamrock Vale S Supreme 0044  
13680421  
Shamrock Vale Trav 3070-6150

#V D A R New Trend 315 AMF-NHF  
Schurrtop Pam 3449  
Shamrock Vale Trav 5204-3070  
Shamrock Vale Trav 5204-3050

						\$W
						+20.02
						SF
						+18.74
						SG
						+23.59
CED	BW	WW	YW	YH	SC	\$QG
+3(.31)	+3.8(.41)	+39(.30)	+75(.29)	+4(.26)	NA	+19.22
CEM		Milk	MW	MH	\$EN	\$YG
-1(.24)		+19(.29)	+37(.36)	+9(.45)	+7.24	+4.37
		CW	Marb	RE	Fat	\$B
		+8(.20)	+34(.22)	-08(.30)	-010(.23)	+39.04

Another 616 daughter, the last we will be offering. Simply a good cow that does her job with style. With a 377 day calving interval on 3 head and ratios of Birth @ 99, Weaning @ 102, Yearling @ 103, and %IMF @ 102 she is dependable in every aspect. One of the good ones! Bred A.I. to GAR New Design 5050, (13728513), due 3/2/2010. No carrier ancestry for AM or NH.

**Bred Cow**  
**51**

**NJR Landmark Annie 616 7013**

DOB 1/15/07 Cow 15811097 Tattoo 7013

Consigned by Neal Reing Angus, Roanoke, TX

#D H D Traveler 6807 AMF-NHF  
#Rito 616 of 4B20 6807 AMF-NHF  
12530601  
+Rita 4B20 of OFB1 Bando

#Q A S Traveler 23-4 AMF-NHF  
#Bemindful Maid D H D 0807  
#Tehama Bando 155 AMF-NHF  
+Rita OFB1 of 5H11 Fullback

#Bon View New Design 1407 AMF-NHF  
+CR MS 1407 3077P21  
14697475  
L C C Landmark Annie J 3077

#B/R New Design 036 AMF-NHF  
Bon View Pride 664  
#S A F Fame AMF-NHF  
Landmark Annie 005

						\$W
						+23.64
						SF
						+21.97
						SG
						+30.63
CED	BW	WW	YW	YH	SC	\$QG
+10(.27)	+0(.30)	+38(.23)	+78(.23)	+4(.05)	+23(.05)	+21.69
CEM		Milk	MW	MH	\$EN	\$YG
+9(.19)		+18(.20)	NA	NA	+6.41	+8.94
		CW	Marb	RE	Fat	\$B
		+8(.20)	+41(.22)	+30(.28)	-010(.22)	+46.64

Pasture exposed to Pullen Angus bull reg. 16051578 A Predestined sired bull from BR Midland cow. \$B 61.57  
Blood checked pregnant 7/19/09 and due 3/30/10 Will palpate prior to sale day.  
Top 10% BW, \$G, \$B Top 20% CEM, MARB, FAT, \$QG  
No carrier ancestors for AM or NH. This will be her second calf.

**Ref Sire**

**Puma Predestined 8177**

DOB 2/24/08 Bull +16051578 Tattoo 8177

Owned by Rayford or Carla Pullen, Bellevue, TX

#B/R New Design 036 AMF-NHF  
#G A R Predestined AMF-NHF  
13395344  
#+G A R Ext 4206

#V D A R New Trend 315 AMF-NHF  
B/R Blackcap Empress 76  
#N Bar Emulation EXT AMF-NHF  
+G A R 6807 Traveler 1432

#BR Midland AMF-NHF  
+B M E Pride of 1001 4055  
15031666  
EXAR Arkdale Pride 1001

#Twin Valley Precision E161 NHC-AMF-RDF  
BR Royal Lass 7036-19  
#Bon View New Design 1407 AMF-NHF  
WK Arkdale Pride 9353

						\$W
						+23.84
						SF
						+36.45
						SG
						+35.86
CED	BW	WW	YW	YH	SC	\$QG
+7(.05)	+3.3(.37)	+52(.28)	+98(.27)	+4(.37)	+09(.34)	+30.74
CEM		Milk	MW	MH	\$EN	\$YG
+6(.05)		+25(.20)	NA	NA	-6.09	+5.12
		CW	Marb	RE	Fat	\$B
		+16(.20)	+76(.24)	+42(.28)	+027(.22)	+61.57

**Bred Heifer**

**NJR Blackcap 616 7014**

**52** DOB 1/19/07 Cow 15811098AMF Tattoo 7014  
 Consigned by Neal Reinig Angus, Roanoke, TX

#D H D Traveler 6807 AMF-NHF		#Q A S Traveler 23-4 AMF-NHF				\$W
#Rito 616 of 4B20 6807 AMF-NHF		#Bemindful Maid D H D 0807				+21.22
12530601		#Tehama Bando 155 AMF-NHF				\$F
+Rita 4B20 of 0FB1 Bando		+Rita 0FB1 of 5H11 Fullback				+32.32
#Vermilion Dateline 7078 AMF-NHF		#Connealy Dateline				\$G
+CR MS VRD 94P23		#Vermilion Blackbird 5044				+19.60
14696894		#+SVF Gdar 216 LTD				\$QG
+G P R 2067 Blackcap H94		Circle A Blackcap 2067				+14.59
CED	BW	WW	YW	YH	SC	\$QG
+6(.27)	+2.6(.30)	+47(.23)	+92(.23)	I+.3(.05)	I-.12(.05)	+14.59
CEM		Milk	MW	MH	SEN	SYG
+6(.19)		+15(.20)	NA	NA	+4.83	+5.01
		CW	Marb	RE	Fat	\$B
		+20(.19)	+22(.22)	+27(.28)	+0.04(.21)	+46.82

AI'd to GAR Yield Grade 5/29/09 for a March calf.  
 Blood checked pregnant 7/19/09 and due 3/7/10 Will palpate prior to sale day.  
 No carrier ancestors for AM or NH. This will be her first calf.

**Bred Cow**

**OVR Blackcap 214**

**53** DOB 9/1/04 Cow 14809173AMF Tattoo 214  
 Consigned by Oak Valley Ranch, Stephenville, TX

#B/R New Design 036 AMF-NHF		#V D A R New Trend 315 AMF-NHF				\$W
#Bon View New Design 208 AMF-NHF		B/R Blackcap Empress 76				+34.16
13044574		#N Bar Emulation EXT AMF-NHF				\$F
#Bon View Erica 443		#Bon View Erica 1380				+25.82
+Twin Hills Intensifier 2207		#Sitz Traveler 8180 AMF-NHF				\$G
Circle A Blackcap 2483		+BT Everelda Entense 76D				+26.51
14228821		#+SVF Gdar 216 LTD				\$QG
+Circle A Blackcap 8655 AMF		Circle A Blackcap 4040				+22.01
CED	BW	WW	YW	YH	SC	\$QG
+10(.29)	-.4(.37)	+51(.27)	+87(.27)	+4(.39)	+1.28(.24)	+22.01
CEM		Milk	MW	MH	SEN	SYG
+8(.20)		+36(.25)	I+31(.05)	I+.5(.05)	-12.31	+4.50
		CW	Marb	RE	Fat	\$B
		+5(.17)	+42(.21)	+05(.26)	+0.009(.20)	+40.67

Bred on 6/6/09 to Summitcrest Complete (14850409) ABS Sire

**Bred Cow**

**OVR Forever Lady 602**

**54** DOB 1/21/06 Cow 15981321 Tattoo 602  
 Consigned by Oak Valley Ranch, Stephenville, TX

#G A R Precision 1680 AMC-NHC		#Tehama Bando 155 AMF-NHF				\$W
+G A R US Premium Beef AMF-NHF		9J9 G A R 856 NHF				+22.59
14301014		#N Bar Emulation EXT AMF-NHF				\$F
G A R Ext 2928 AMF-NHF		+G A R 6807 Traveler 154				+31.09
#+G A R Expectation 4915 AMF-NHF		#N Bar Emulation EXT AMF-NHF				\$G
M A R Forever Lady 41		G A R Traveler 2421				+16.48
14742092		#+V D A R Lucys Boy AMF-NHF				\$QG
S V F A D F Forever Lady 11		+Tomaw Forever Lady 03E				+12.49
CED	BW	WW	YW	YH	SC	\$QG
+5(.30)	+2.6(.35)	+45(.26)	+90(.25)	-.2(.36)	-1.12(.22)	+12.49
CEM		Milk	MW	MH	SEN	SYG
+6(.21)		+21(.23)	NA	NA	+61	+3.99
		CW	Marb	RE	Fat	\$B
		+24(.17)	+17(.21)	+51(.27)	+0.034(.20)	+45.73

Bred on 6/4/09 to Predestined (13395344)

**Bred Cow**

**OVR Lady Pride 643**

**55** DOB 8/26/06 Cow 15500486AMF Tattoo 643  
 Consigned by Oak Valley Ranch, Stephenville, TX

#B/R New Design 036 AMF-NHF		#V D A R New Trend 315 AMF-NHF				\$W
#G A R Predestined AMF-NHF		B/R Blackcap Empress 76				+19.79
13395344		#N Bar Emulation EXT AMF-NHF				\$F
#+G A R Ext 4206		+G A R 6807 Traveler 1432				+23.75
#Famous 7001 AMF		#S A F Fame AMF-NHF				\$G
OVR Lady Pride 134		T K Karen 1369				+36.17
14707096		+Finks Stepahead				\$QG
Lady 228 Stepahead 454		Lady Skylar B30				+28.95
CED	BW	WW	YW	YH	SC	\$QG
+4(.30)	+4.1(.34)	+41(.26)	+81(.25)	+1(.35)	I+.60(.05)	+28.95
CEM		Milk	MW	MH	SEN	SYG
+6(.21)		+25(.23)	NA	NA	-58	+7.22
		CW	Marb	RE	Fat	\$B
		+14(.19)	+67(.22)	+31(.28)	-.001(.21)	+57.57

Bred on 5/26/09 to Objective (13776378)

**Pair**

**R&L 4144 Traveler 2005**

**56** DOB 10/3/05 Cow 15173160 Tattoo 2005  
 Consigned by R & L Farms, Bonham, TX

#D H D Traveler 6807 AMF-NHF		#Q A S Traveler 23-4 AMF-NHF				\$W
#G A R 6807 Traveler 4144 AMF-NHF		#Bemindful Maid D H D 0807				+25.38
12304120		#Rito 2100 G D A R				\$F
+G A R Rito 290		Blackclass G A R 103				+25.98
#N Bar Emulation EXT AMF-NHF		#Emulation N Bar 5522				\$G
MLCC Princess Anne 0137		N Bar Primrose 2424				+18.79
13864957		#+Nelson Target 7255				\$QG
4 S Lady Target 8613		4 S Stone Lady 8691				+10.86
CED	BW	WW	YW	YH	SC	\$QG
+8(.27)	+1.7(.34)	+48(.26)	+86(.24)	+8(.34)	I+.23(.05)	+10.86
CEM		Milk	MW	MH	SEN	SYG
+8(.19)		+15(.24)	I+58(.05)	I+.6(.05)	+6.43	+7.93
		CW	Marb	RE	Fat	\$B
		+9(.16)	+13(.19)	+09(.24)	-.027(.18)	+36.57

Selling her second calf, this young cow has EPD's that rank her in the Top 15% for WW, YW, CED, \$F and \$YG. 2005's first calf ratioed 96 for Birth, 108 for Weaning, 101 for Yearling and 106 for %IMF. Her dam has produced 6 calves at an interval of 366 days with 4 ratioing 106 for %IMF. AI bred to GAR New Design 5050 (13728513) on 6/14/09 and pasture exposed to R&L Solution 6032-1108 (16024300AMF) from 6/24/09 to 8/15/09.

**Ref Sire**

**R&L Solution 6032-1108**

DOB 1/23/08 Bull 16024300AMF Tattoo 1108  
 Owned by R & L Farms, Bonham, TX

#S S Traveler 6807 T510 AMF		#D H D Traveler 6807 AMF-NHF				\$W
G A R Solution AMC-NHF		#S S Miss Hi Spade A114				+28.26
14222615		#B/R New Design 036 AMF-NHF				\$F
+G A R New Design 50		G A R Precision 2536 AMC-NHF				+24.94
#Gardens Prime Time AMF-NHF		#R R Traveler 5204 AMF-NHF				\$G
R&L Gardens Pride N Joy 1001		#Green Garden Susie 1246 S1				+34.67
13934751		#B/R New Design 036 AMF-NHF				\$QG
MLCC Prides New Design 9161		Clarks Pride 6077				+28.41
CED	BW	WW	YW	YH	SC	\$QG
+11(.28)	+2(.32)	+43(.25)	+83(.25)	+8(.34)	+1.05(.31)	+28.41
CEM		Milk	MW	MH	SEN	SYG
+6(.16)		+27(.19)	I+27(.05)	I+.3(.05)	-2.55	+6.26
		CW	Marb	RE	Fat	\$B
		+1(.19)	+65(.23)	+08(.26)	+0.003(.20)	+44.84

**Bull Calf**

**56A**

**R&L Structure 4207-6009**

DOB 4/7/09 Bull 16368153 Tattoo 6009  
Consigned by R & L Farms, Bonham, TX

#G 13 Structure  
R&L Structure Kietanono 4207  
15688795  
R&L 208 New Design 205

#TC Stockman 365  
#G 13 Traveler 9428  
#Bon View New Design 208 AMF-NHF  
Sedad Miss Mabel 818

#G A R 6807 Traveler 4144 AMF-NHF  
R&L 4144 Traveler 2005  
15173160  
MLCC Princess Anne 0137

#D H D Traveler 6807 AMF-NHF  
+G A R Rito 290  
#N Bar Emulation EXT AMF-NHF  
4 S Lady Target 8613

CEW	BW	WW	YW	YH	SC	\$W
I+7(.05)	I+1.8(.05)	I+47(.05)	I+84(.05)	I+.6(.05)	NA	+26.79
CEM		Milk	MW	MH	\$EN	\$F
I+7(.05)		I+21(.05)	NA	NA	+1.73	+24.40
		CW	Marb	RE	Fat	\$G
		I+8(.05)	I+.22(.05)	I+.16(.05)	I-.039(.05)	+24.48
						\$Q
						+14.59
						\$Y
						+9.89
						\$B
						+41.10

Birth weight 72 lbs.

**Bred Cow**

**57**

**R&L 1407 New Design 2906**

DOB 9/22/06 Cow 15536189 Tattoo 2906  
Consigned by R & L Farms, Bonham, TX

#B/R New Design 036 AMF-NHF  
#Bon View New Design 1407 AMF-NHF  
12783540  
Bon View Pride 664

#V D A R New Trend 315 AMF-NHF  
B/R Blackcap Empress 76  
#+G A R Sleep Easy 1009 AMF-NHF  
#Bon View Pride 1551

#+S A F Strategy 9015 AMF-NHF  
R&L Kindness Kimella 2904  
14821363  
R&L Kindness Annabelle 902

#S A F Focus of E R AMF-NHF  
+S A F Royal Queen 5084  
#TC Stockman 365  
Tehama Kindnes Princess D593

CEW	BW	WW	YW	YH	SC	\$W
+8(.28)	+1.4(.32)	+47(.25)	+87(.24)	+5(.33)	NA	+27.53
CEM		Milk	MW	MH	\$EN	\$F
+11(.19)		+25(.20)	NA	NA	-2.77	+27.34
		CW	Marb	RE	Fat	\$G
		+9(.19)	+68(.22)	+14(.28)	+0.10(.21)	+33.92
						\$Q
						+29.14
						\$Y
						+4.78
						\$B
						+52.05

This young cow has had one calf and has EPD's that most breeders are aiming at. . . Top 4% for Beef Value, Top 2% for \$Q, Top 3% for \$G and Top 15% for \$W and \$F. Her ultrasound showed an adjusted 6.90 for %IMF and 9.2 for RE. Her dam has produced 3 calves with a ratio of 102 for Weaning, 101 for Yearling, 115 for %IMF and 106 for RE. AI bred to Sitz Upward 307R (14963730) on 6/14/08 and pasture exposed to R&L Solution 6032-1108 (16024300AMF) from 6/24/09 to 8/15/09.

**Bred Heifer**

**58**

**R&L 506 Yield Grade 3308**

DOB 3/21/08 Cow 16024308 Tattoo 3308  
Consigned by R & L Farms, Bonham, TX

+G A R Yield Grade AMF-NHF  
R&L YG Cherokee 506  
15305161  
WFAR Ms Ambush 9440 8340

#G A R Precision 1680 AMC-NHC  
+G A R Ext 4526 AMF  
#R R Scotchcap 9440 AMF-NHF  
R A R Miss Ambush 234

#B/R New Design 323-9150 AMF-NHF  
R&L 9150 New Design 3005  
14965418  
MLCC Kinochtry 330

#B/R New Design 323  
B/R Ruby of Tiffany 4117  
#Papa Equator 2928 AMF-NHF  
N Bar O Kinochtry D2937

CEW	BW	WW	YW	YH	SC	\$W
+7(.18)	+2.2(.25)	+40(.16)	+81(.12)	I+.6(.05)	NA	+22.30
CEM		Milk	MW	MH	\$EN	\$F
+8(.09)		+23(.11)	NA	NA	+1.82	+25.98
		CW	Marb	RE	Fat	\$G
		I+19(.05)	I+.34(.05)	I+.17(.05)	I+0(.05)	+23.64
						\$Q
						+19.22
						\$Y
						+4.42
						\$B
						+48.58

This heifer is the second calf of her dam, with the first going into the show ring as a weanling and has won at several youth shows in the Plano area. AI bred to WAR Alliance 9126 6006 (13433023) on 6/14/08 and pasture exposed to R&L Solution 6032-1108 (16024300AMF) from 6/24/09 to 8/15/09.

**Bred Heifer**

**59**

**R&L 506 Yield Grade 1508**

DOB 4/1/08 Cow 16024313 Tattoo 1508  
Consigned by R & L Farms, Bonham, TX

+G A R Yield Grade AMF-NHF  
R&L YG Cherokee 506  
15305161  
WFAR Ms Ambush 9440 8340

#G A R Precision 1680 AMC-NHC  
+G A R Ext 4526 AMF  
#R R Scotchcap 9440 AMF-NHF  
R A R Miss Ambush 234

#+GDAR SVF Traveler 234D AMF-NHF  
MLCC Rachel 115  
14031978  
M A 9472 of 009 Executive

#Traveler 124 G D A R  
+G D A R Forever Lady 718  
#G D A R Executive 727 AMF-NHF  
M A Pride 009 of Val 501

CEW	BW	WW	YW	YH	SC	\$W
I+8(.05)	I+2.7(.05)	I+39(.05)	I+77(.05)	I+.5(.05)	I+.45(.05)	+21.15
CEM		Milk	MW	MH	\$EN	\$F
I+8(.05)		I+20(.05)	NA	NA	+4.84	+20.64
		CW	Marb	RE	Fat	\$G
		I+18(.05)	I+.15(.05)	I+.27(.05)	I-.001(.05)	+17.67
						\$Q
						+11.67
						\$Y
						+6.00
						\$B
						+41.24

This heifer comes from a cow family that has been one of our top producers. Her dam has produced 5 calves with a Yearling ratio of 103, %IMF ratio of 107 and RE ratio of 101. AI bred to TC Franklin 619 (15462648) on 6/14/09 and pasture exposed to R&L Solution 6032-1108 (16024300AMF) from 6/24/09 to 8/15/09.

**Open Heifer**

**60**

**BLC 3J15 Juanada 147U**

DOB 9/3/08 Cow 16153171 Tattoo 147U  
Consigned by Sowards Farm, Tulsa, OK

#S S Objective T510 OT26 AMF-NHF  
Quaker Hill Objective 3J15 AMF-NHF  
14660859  
#Quaker Hill Queen 1L4 AMF

#S S Traveler 6807 T510 AMF  
S S Miss Rita R011 7R8 AMF  
+BW/QHF Blackcap Lad  
Ankony Queen Q H F R981

+Rito Plus AMF  
BLC Rito Plus Juanada 035P AMF  
14887171  
+B L C Juanada 006F

#Rockn D Ambush 1531 AMF-NHF  
G A R Precision 2536 AMC-NHF  
#O C C Maternal Trend 725Y AMF-NHF  
L A Juanada 2224

CEW	BW	WW	YW	YH	SC	\$W
I+3(.05)	+3.3(.23)	+58(.26)	+58(.26)	NA	NA	+27.22
CEM		Milk	MW	MH	\$EN	\$F
I+5(.05)		+26(.14)	NA	NA	-7.97	+37.14
		CW	Marb	RE	Fat	\$G
		I+21(.05)	I+.33(.05)	I.47(.05)	I+.009(.05)	+25.71
						\$Q
						+18.85
						\$Y
						+6.86
						\$B
						+54.73

An exciting fall heifer sired by the extreme EPD sire Quaker Hill Objective 3J15 that carries the outstanding production characteristics of her sire. This heifer has an attractive Production EPD combination, which ranks in the Top 1% WW and Top 2% YW. BLC 3J15 Juanada has the growth and carcass pedigree to fit into any program. SELLS OPEN!

**Open Heifer**

**61**

**Sowards Miss Erica 804**

DOB 9/10/08 Cow 16159919 Tattoo 804  
Consigned by Sowards Farm, Tulsa, OK

#S S Traveler 6807 T510 AMF  
#S S Objective T510 OT26 AMF-NHF  
13776378  
S S Miss Rita R011 7R8 AMF

#D H D Traveler 6807 AMF-NHF  
#S S Miss Hi Spade A114  
S S Rito Rito R76 R011  
S S Miss Ultress U56

#+G D A R Rolls Royce 203  
A L C Erica 0150  
13540756  
Thomas Erica 7009

#+G D A R Royce 131  
+G D A R Forever Lady 719  
#+G A R Sleep Easy 1009 AMF-NHF  
Thomas Erica 5008

CEW	BW	WW	YW	YH	SC	\$W
+10(.28)	+1.8(.34)	+59(.26)	+103(.21)	I+.5(.05)	I-.11(.05)	+31.04
CEM		Milk	MW	MH	\$EN	\$F
+7(.18)		+26(.21)	I+69(.05)	I+.8(.05)	-7.97	+38.81
		CW	Marb	RE	Fat	\$G
		I+13(.05)	I+.35(.05)	I+.24(.05)	I-.022(.05)	+28.13
						\$Q
						+19.62
						\$Y
						+8.51
						\$B
						+52.19

An especially attractive daughter of the extreme EPD sire SS Objective T510 OT26 that carries the outstanding production characteristics of her sire. Look closely at the Production EPD's for this heifer, which rank in the Top 4% WW and Top 4% YW. Miss Erica 804 has the growth and carcass pedigree to fit into any program. SELLS OPEN!

Open Heifer

62

**Sowards Miss Erica 808**

DOB 9/27/08 Cow 16159923 Tattoo 808  
Consigned by Sowards Farm, Tulsa, OK

#S S Traveler 6807 T510 AMF  
#S S Objective T510 OT26 AMF-NHF  
13776378  
S S Miss Rita R011 7R8 AMF

#D H D Traveler 6807 AMF-NHF  
#S S Miss Hi Spade A114  
S S Rito Rito R76 R011  
S S Miss Ultress U56

B L C Designer 029J  
BLC Erica 129N  
15088436  
Erica of Clear Creek 833

#B/R New Design 036 AMF-NHF  
+B L C Traveler Beauty 003F  
#TC Dividend 963 AMF-NHF-RDF  
Erica of Clearcreek 759

						\$W	+25.68
						\$F	+36.91
						\$G	+30.85
CEW	+4.2(.34)	WW	+56(.25)	YW	+100(.19)	YH	I+.6(.05)
CEM	+5(.16)	Milk	+27(.19)	MW	I+49(.05)	MH	I+.4(.05)
		CW	I+13(.05)	Marb	I+.46(.05)	RE	I+.23(.05)
						Fat	I-.013(.05)
						\$B	+54.35
						\$QG	+23.30
						\$EN	-7.25
						\$YG	+7.55

An attractive heifer sired by the extreme EPD sire SS Objective T510 OT26. This extreme EPD heifer has top of class Production EPDs and ranks in the Top 5% WW and Top 5% YW. Miss Erica 808 has the eye appeal, growth and carcass pedigree to add value to any program. SELLS OPEN!

Ref Sire

**BLC 1407 New Design 057P**

DOB 2/21/04 Bull +14887167AMF Tattoo 057P  
Owned by Sowards Farm, Tulsa, OK

#B/R New Design 036 AMF-NHF  
#Bon View New Design 1407 AMF-NHF  
12783540  
Bon View Pride 664

#V D A R New Trend 315 AMF-NHF  
B/R Blackcap Empress 76  
#+G A R Sleep Easy 1009 AMF-NHF  
Bon View Pride 1551

						\$W	+24.21
						\$F	+9.59
						\$G	+32.58
CEW	+12(.36)	WW	+31(.41)	YW	+62(.32)	YH	+5(.40)
CEM	+13(.22)	Milk	+23(.26)	MW	NA	MH	NA
		CW	-2(.21)	Marb	+72(.24)	RE	+04(.30)
						Fat	+035(.22)
						\$B	+36.32
						\$QG	+29.97
						\$EN	+6.59
						\$YG	+2.61

An excellent Bon View New Design 1407 granddaughter with solid EPDs and good maternal strength. Miss Erica 813 has exceptional phenotype with balanced EPDs and milking ability. Miss Erica 813 will make an excellent addition to any program. SELLS OPEN!

Open Heifer

63

**Sowards Miss Blackcap 812**

DOB 10/7/08 Cow 15981321 Tattoo 812  
Consigned by Sowards Farm, Tulsa, OK

#Bon View New Design 1407 AMF-NHF  
+BLC 1407 New Design 057P AMF  
14887167  
Summitcrest Beauty J239

#B/R New Design 036 AMF-NHF  
Bon View Pride 664  
#Summitcrest Scotch Cap 0B45 AMF-NHF  
#Summitcrest Beauty D106

#+Stevenson Royce 741C  
G L R Blackcap 110  
13884546  
Blackcap 705 of Sqar

#+G D A R Royce 131  
#Ahlgrens Estella 2758 E T E  
#TC Dividend 963 AMF-NHF-RDF  
Alc Blackcap 5022

						\$W	+21.80
						\$F	+17.95
						\$G	+23.18
CEW	+6(.22)	WW	+36(.21)	YW	+73(.14)	YH	I+.6(.05)
CEM	+8(.11)	Milk	+23(.13)	MW	NA	MH	NA
		CW	I+4(.05)	Marb	I+.39(.05)	RE	I-.01(.05)
						Fat	I+.022(.05)
						\$B	+34.72
						\$QG	+20.92
						\$EN	+3.23
						\$YG	+2.26

An excellent Bon View New Design 1407 granddaughter with solid EPDs and good maternal strength. Miss Blackcap 812 has exceptional phenotype with balanced EPDs and milking ability. Miss Blackcap 812 will make an excellent addition to any program. SELLS OPEN!

Open Heifer

64

**Sowards Miss Erica 813**

DOB 10/12/08 Cow 16159928 Tattoo 813  
Consigned by Sowards Farm, Tulsa, OK

#Bon View New Design 1407 AMF-NHF  
+BLC 1407 New Design 057P AMF  
14887167  
Summitcrest Beauty J239

#B/R New Design 036 AMF-NHF  
Bon View Pride 664  
#Summitcrest Scotch Cap 0B45 AMF-NHF  
#Summitcrest Beauty D106

+Midwest T69N  
BLC T69N Erica 145R  
15117512  
BLC Erica 129N

#Twin Valley Precision E161 NHC-AMF-RDF  
BR Royal Lass 7036-19  
B L C Designer 029J  
Erica of Clear Creek 833

						\$W	+26.87
						\$F	+16.50
						\$G	NA
CEW	+12(.20)	WW	+40(.21)	YW	+73(.12)	YH	I+.4(.05)
CEM	+12(.08)	Milk	+19(.11)	MW	NA	MH	NA
		CW	NA	Marb	NA	RE	NA
						Fat	NA
						\$B	NA
						\$QG	NA
						\$EN	+7.03
						\$YG	NA

An excellent Bon View New Design 1407 granddaughter with solid EPDs and good maternal strength. Miss Erica 813 has exceptional phenotype with balanced EPDs and milking ability. Miss Erica 813 will make an excellent addition to any program. SELLS OPEN!

Open Heifer

65

**Sowards Miss Queenmar 817**

DOB 10/28/08 Cow 16159932 Tattoo 817  
Consigned by Sowards Farm, Tulsa, OK

#Bon View New Design 1407 AMF-NHF  
+BLC 1407 New Design 057P AMF  
14887167  
Summitcrest Beauty J239

#B/R New Design 036 AMF-NHF  
Bon View Pride 664  
#Summitcrest Scotch Cap 0B45 AMF-NHF  
#Summitcrest Beauty D106

						\$W	+20.80
						\$F	+8.69
						\$G	+26.67
CEW	+5(.21)	WW	+31(.21)	YW	+61(.12)	YH	I+.6(.05)
CEM	+8(.08)	Milk	+21(.11)	MW	NA	MH	NA
		CW	I+0(.05)	Marb	I+.50(.05)	RE	I-.12(.05)
						Fat	I+.017(.05)
						\$B	+32.42
						\$QG	+24.50
						\$EN	+8.61
						\$YG	+2.17

An excellent Bon View New Design 1407 granddaughter with solid EPDs and good maternal strength. Miss Queenmar 817 has exceptional phenotype with balanced EPDs and milking ability. Miss Queenmar 817 will make an excellent addition to any program. SELLS OPEN!

Ref Sire

**Priefert H6**

DOB 3/13/04 Bull +14881479 Tattoo 4007  
Owned by Summerhill Farm, Cookeville, TX

#N Bar Emulation EXT AMF-NHF  
#Nichols Extra H6 AMF-NHF  
13207590  
Nichols Eileen May F261

#Emulation N Bar 5522  
N Bar Primrose 2424  
Nichols Black Ink D220  
Nichols Eileen May B241

#S A F Fame AMF-NHF  
Bottie Bo of Conanga 5862  
12886415  
Bottie Blan of Conanga

#Minerts Fortune 2000 AMF-NHF  
#+S A F Royal Lass 1027  
#N Bar Emulation EXT AMF-NHF  
Bottie Bea of Conanga

						\$W	+24.56
						\$F	+30.93
						\$G	+16.22
CEW	+8(.24)	WW	+48(.24)	YW	+91(.23)	YH	I+.5(.05)
CEM	+10(.19)	Milk	+15(.22)	MW	NA	MH	NA
		CW	I+10(.05)	Marb	I+.20(.05)	RE	I+.06(.05)
						Fat	I+.019(.05)
						\$B	+36.04
						\$QG	+13.80
						\$EN	+4.96
						\$YG	+2.42

An excellent Bon View New Design 1407 granddaughter with solid EPDs and good maternal strength. Miss Queenmar 817 will make an excellent addition to any program. SELLS OPEN!

Bred Heifer

66

**Summerhill Dixie 812**

DOB 1/9/08 Cow 16206037 Tattoo 812  
Consigned by Summerhill Farm, Cookville, TX

Connealy Onward *AMF-NHF*  
Summerhill Onward 501  
15467331  
Enlita of Conanga 5383

#Connealy Lead On *AMF-NHF*  
Altune of Conanga 6104  
Connealy Vision 63 *AMF-NHF*  
#Parsleys Best of Conanga

#Rito 616 of 4B20 6807 *AMF-NHF*  
Black Cash of Conanga 039  
14220106  
Black Cow of Conanga 5098

#D H D Traveler 6807 *AMF-NHF*  
+Rita 4B20 of OFB1 Bando  
Connealy Venture 4423  
Black Crest of Conanga

CED	BW	WW	YW	YH	SC	\$QG
+11(.19)	+0(.28)	+42(.18)	+85(.11)	NA	NA	+15.84
CEM		Milk	MW	MH	\$EN	\$YG
+8(.08)		+18(.11)	NA	NA	+4.28	+7.24
		CW	Marb	RE	Fat	\$B
		+6(.09)	+25(.12)	+12(.17)	-.010(.12)	+38.63

5 1/2 months bred to Priefert H6 (14881479)  
Pasture Exposed 4/30 - 8/1/09

Bred Heifer

67

**Summerhill Trixie 814**

DOB 1/30/08 Cow 16206039 Tattoo 814  
Consigned by Summerhill Farm, Cookville, TX

Connealy Onward *AMF-NHF*  
Summerhill Onward 501  
15467331  
Enlita of Conanga 5383

#Connealy Lead On *AMF-NHF*  
Altune of Conanga 6104  
Connealy Vision 63 *AMF-NHF*  
#Parsleys Best of Conanga

K C F Bennett Coalition *SCC AMF-NHF*  
Summerhill Coco 603  
15467334  
Black Cash of Conanga 039

#Sitz Alliance 6595 *AMF-NHF*  
#Pleasant Pill of Conanga  
#Rito 616 of 4B20 6807 *AMF-NHF*  
Black Cow of Conanga 5098

CED	BW	WW	YW	YH	SC	\$QG
+9(.19)	+9(.26)	+47(.17)	+90(.10)	NA	NA	+20.60
CEM		Milk	MW	MH	\$EN	\$YG
+8(.08)		+21(.10)	NA	NA	+.06	+5.07
		CW	Marb	RE	Fat	\$B
		+5(.09)	+38(.12)	+08(.17)	+.007(.12)	+41.02

5 1/2 months bred to Priefert H6 (14881479)  
Pasture Exposed 4/30 - 8/1/09

Bred Heifer

68

**Summerhill Dottie 815**

DOB 2/22/08 Cow 16206040 Tattoo 815  
Consigned by Summerhill Farm, Cookville, TX

Connealy Onward *AMF-NHF*  
Summerhill Onward 501  
15467331  
Enlita of Conanga 5383

#Connealy Lead On *AMF-NHF*  
Altune of Conanga 6104  
Connealy Vision 63 *AMF-NHF*  
#Parsleys Best of Conanga

#S A Neutron 377 *AMF-NHF*  
Miss MCK Neutron 3011  
14739854  
Black Pip of Conanga 6920

#+S A F Neutron *AMF-NHF*  
#S A Queen Susan 102  
Connealy Piper 837  
Black Derls of Conanga

CED	BW	WW	YW	YH	SC	\$QG
I+5(.05)	I+1.6(.05)	I+47(.05)	I+89(.05)	NA	NA	+13.80
CEM		Milk	MW	MH	\$EN	\$YG
I+7(.05)		I+16(.05)	NA	NA	+4.80	+6.40
		CW	Marb	RE	Fat	\$B
		I+10(.05)	I+20(.05)	I+15(.05)	I-.006(.05)	+39.58

5 1/2 months bred to Priefert H6 (14881479)  
Pasture Exposed 4/30 - 8/1/09

Bred Cow

69

**Falcon Forever Lady 7915**

DOB 11/11/05 Cow 15316564 Tattoo 7915  
Consigned by Trinity Farms, Mt. Pleasant, TX

#+Leachman Right Time  
+Falcon Right Time 769M  
143461926  
+Sitz Everelda Entense 023

#N Bar Emulation *EXT AMF-NHF*  
Leachman Erica 0025  
#Traveler 124 G D A R  
Sitz Everelda Entense 1137

#Rockn D Ambush 1531 *AMF-NHF*  
+Falcon Forever Lady 355M  
14346619  
+Boyd Forever Lady 8003

#Paramont Ambush 2172 *AMF-NHF*  
MS Blackcap Band of R D 1301  
#A A R New Trend  
S V F Forever Lady 57D

CED	BW	WW	YW	YH	SC	\$QG
+3(.21)	+3.7(.28)	+47(.20)	+81(.19)	I+.5(.05)	I+.66(.05)	+10.86
CEM		Milk	MW	MH	\$EN	\$YG
+6(.12)		+20(.17)	NA	NA	+3.63	+7.47
		CW	Marb	RE	Fat	\$B
		+10(.13)	+13(.15)	+.23(.21)	-.007(.15)	+35.96

AI'd on 3/28/09 to Connealy All Around (15490811)

Bred Cow

70

**JMc Black Dena 6436 3138**

DOB 12/2/06 Cow 15769008 Tattoo 6436  
Consigned by Trinity Farms, Mt. Pleasant, TX

#+G A R Grid Maker *AMF-NHF*  
+Connealy Power Grid  
14528409  
Eligence Plus of Conanga

#G D A R Traveler 044 *AMF-NHF*  
G A R Precision 2536 *AMC-NHF*  
#TC Dividend 963 *AMF-NHF-RDF*  
Eura Cap of Conanga

#Hyline Right Time 338 *AMF-NHF*  
Black Dea of Conanga 6030  
14528064  
#Black Max of Conanga 6196

#+Leachman Right Time  
Hyline Pride 265  
#G T Maximum *AMF-NHF*  
#Black Damsel of Conanga

CED	BW	WW	YW	YH	SC	\$QG
+4(.24)	+3.4(.36)	+45(.26)	+87(.24)	+.8(.35)	I+1.06(.05)	+10.01
CEM		Milk	MW	MH	\$EN	\$YG
+4(.11)		+18(.17)	NA	NA	+3.31	+3.85
		CW	Marb	RE	Fat	\$B
		+18(.11)	+11(.15)	+36(.22)	+.028(.15)	+38.98

AI'd on 2/9/09 to Connealy All Around (15490811)

Bred Cow

71

**MCK Gessy Ann 7019**

DOB 1/30/07 Cow +15822448 Tattoo 7019  
Consigned by Trinity Farms, Mt. Pleasant, TX

#Connealy Lead On *AMF-NHF*  
Connealy Leader *AMF-NHF*  
14528246  
Black Crane of Conanga 204

#Connealy Leadtime *AMF-NHF*  
Eligence Plus of Conanga  
#Connealy Forefront *AMF-NHF*  
#Black Cala of Conanga 5203

#Bon View New Design 878 *AMF-NHF*  
Geena of Conanga 64474  
14216586  
Georganas 6807 of Conanga620

#B/R New Design 036 *AMF-NHF*  
Bon View Gammer 85  
#D H D Traveler 6807 *AMF-NHF*  
Gossipy of Conanga

CED	BW	WW	YW	YH	SC	\$QG
+10(.19)	+.1(.25)	+42(.21)	+89(.20)	+.4(.37)	I+.21(.05)	+14.59
CEM		Milk	MW	MH	\$EN	\$YG
+9(.12)		+31(.19)	NA	NA	-9.02	+8.07
		CW	Marb	RE	Fat	\$B
		+11(.12)	+22(.16)	+.30(.24)	-.006(.16)	+43.26

AI'd 5/20/09 to TC Total 410 (14844711)



**PRODUCTION**

**Calving Ease Direct (CED)**, is expressed as a difference in percentage of unassisted births, with a higher value indicating greater calving ease in first-calf heifers. It predicts the average difference in ease with which an sire's calves will be born when he is bred to first-calf heifers.

**Birth Weight EPD (BW)**, expressed in pounds, is a predictor of a sire's ability to transmit birth weight to his progeny compared to that of other sires.

**Weaning Weight EPD (WW)**, expressed in pounds, is a predictor of a sire's ability to transmit weaning growth to his progeny compared to that of other sires.

**Yearling Weight EPD (YW)**, expressed in pounds, is a predictor of a sire's ability to transmit yearling growth to his progeny compared to that of other sires.

**Yearling Height EPD (YH)**, is a predictor of a sire's ability to transmit yearling height, expressed in inches, compared to the that of other sires.

**Scrotal Circumference EPD (SC)**, expressed in centimeters, is a predictor of the difference in transmitting ability for scrotal size compared to that of other sires.

**MATERNAL**

**Calving Ease Maternal (CEM)**, is expressed as a difference in percentage of unassisted births with a higher value indicating greater calving ease in first-calf daughters. It predicts the average ease with which a sire's daughters will calve as first-calf heifers when compared to daughters of other sires.

**Maternal Milk EPD (Milk)**, is a predictor of a sire's genetic merit for milk and mothering ability as expressed in his daughters compared to daughters of other sires. In other words, it is that part of a calf's weaning weight attributed to milk and mothering ability.

**Herds (MkH)**, indicate the number of herds from which daughters are reported.

**Daughters (MkD)**, reflects the number of daughters that have progeny weaning weight records included in the analysis.

**Mature Weight EPD (MW)**, expressed in pounds, is a predictor of the difference in mature weight of daughters of a sire compared to the daughters of other sires.

**Mature Height EPD (MH)**, expressed in inches, is a predictor of the difference in mature height of a sire's daughters compared to daughters of other sires.

**Cow Energy Value (\$EN)**, expressed in dollars savings per cow per year, assesses differences in cow energy requirements as an expected dollar savings difference in daughters of sires. A larger value is more favorable when comparing two animals (more dollars saved on feed energy expenses). Components for computing the cow \$EN savings difference include lactation energy requirements and energy costs associated with differences in mature cow size.

**CARCASS**

**Carcass Weight EPD (CW)**, expressed in pounds is a predictor of the differences in hot carcass weight of a sire's progeny compared to progeny of other sires.

**Marbling EPD (Marb)**, expressed as a fraction of the difference in USDA marbling score of a sire's progeny compared to progeny of other sires.

**Ribeye Area EPD (RE)**, expressed in square inches, is a predictor of the difference in ribeye area of a sire's progeny compared to progeny of other sires.

**Fat Thickness EPD (Fat)**, expressed in inches, is a predictor of the differences in external fat thickness at the 12th rib (as measured between the 12th and 13th ribs) of a sire's progeny compared to progeny of other sires.

**Percent Retail Product EPD (%RP)**, is a predictor of the difference in pounds of salable retail product of a given sire's progeny compared to progeny of other sires.

**Group/progeny (Grp/Pg)**, reflects the number of contemporary groups and the number of carcasses for each sire included in the analysis.

**ULTRASOUND**

**Intramuscular Fat EPD (%IMF)**, is a predictor of the difference in a sire's progeny for percent intramuscular fat in the ribeye muscle compared to other sires.

**Ribeye Area EPD (RE)**, is a predictor of the difference in square inches of ultrasound ribeye area of a sire's progeny compared to the progeny of other sires.

**Fat Thickness EPD (FAT)**, expressed in inches, is a predictor of the difference in ultrasound fat thickness at the 12th rib of a sire's progeny compared to the progeny of other sires. It includes the weighted average of 60% of the rib fat measurement and 40% of the rump fat measurement.

**Percent Retail Product EPD (%RP)**, is a predictor of the difference in pounds of salable retail product as derived from ultrasound measures of a sire's progeny compared to progeny of other sires.

**Group/progeny (GP/PG)**, is the number of contemporary groups and number of progeny considered in this analysis.

**\$VALUE INDEXES**

**\$Value indexes** are multi-trait selection indexes, expressed in dollars per head, to assist beef producers by adding simplicity to genetic selection decisions. The \$Value is an estimate of how future progeny of each sire are expected to perform, on average, compared to progeny of other sires in the database if the sires were randomly mated to cows and if calves were exposed to the same environment. More Info

**Weaned Calf Value (\$W)**, an index value expressed in dollars per head, is the expected average difference in future progeny performance for preweaning merit. \$W includes both revenue and cost adjustments associated with differences in birth weight, weaning direct growth, maternal milk, and mature cow size.

**Feedlot Value (\$F)**, an index value expressed in dollars per head, is the expected average difference in future progeny performance for postweaning merit compared to progeny of other sires.

**Grid Value (\$G)**, an index value expressed in dollars per head, is the expected average difference in future progeny performance for carcass grid merit compared to progeny of other sires.

**Quality Grade (\$QG)**, \$QG represents the quality grade segment of the economic advantage found in \$G. \$QG is intended for the specialized user wanting to place more emphasis on improving quality grade. The carcass marbling (Marb) EPD and ultrasound-derived percent intramuscular fat (%IMF) EPD contribute to \$QG.

**Yield Grade (\$YG)**, \$YG represents the yield grade segment of the economic advantage found in \$G. \$YG is intended for the specialized user wanting to place more emphasis on red meat yield. It provides a multi-trait approach to encompass ribeye, fat thickness and weight into an economic value for red meat yield.

**Beef Value (\$B)**, an index value expressed in dollars per head, is the expected average difference in future progeny performance for postweaning and carcass value compared to progeny of other sires.

**Breed Average EPD and \$Values - Fall 2009**

	PRODUCTION						MATERNAL						CARCASS						\$VALUES			
	CED	BW	WW	YW	YH	SC	CEM	Milk	MW	MH	\$EN	CW	Marb	RE	Fat	\$W	\$F	\$G	\$B			
Current Sires <sup>1</sup>	+5	+2.1	+42	+78	+4	+36	+6	+21	+32	+4	+4.02	+11	+27	+12	+009	+23.82	+21.01	+19.69	+37.59			
Main Sires	+6	+2.0	+45	+83	+4	+39	+7	+21	+33	+4	+2.67	+11	+28	+13	+009	+24.93	+24.96	+19.48	+36.14			
Supplemental Sires	+6	+1.9	+45	+84	+4	+47	+7	+22			+1.05	+13	+30	+16	+014	+24.90	+25.03	+20.13	+40.45			
Current Dams <sup>1</sup>	+4	+2.4	+38	+70	+4	+26	+6	+19	+32	+5	+8.03	+8	+22	+06	+006	+22.33	+14.38	+17.94	+32.11			
Non-Parent Bulls	+5	+2.1	+45	+82	+4	+42	+6	+21			+1.98	+12	+30	+16	+013	+24.83	+23.62	+21.30	+40.71			
Non-Parent Cows	+5	+2.1	+44	+81	+4		+6	+21			+2.27	+13	+34	+18	+013	+24.75	+23.18	+21.60	+41.05			

<sup>1</sup> at least one calf record in herd book within the past two years

**Expected Progeny Difference (EPD)**, is the prediction of how future progeny of each animal are expected to perform relative to the progeny of other animals listed in the database. EPDs are expressed in units of measure for the trait, plus or minus. Interim EPDs may appear on young animals when their performance has yet to be incorporated into the American Angus Association National Cattle Evaluation (NCE) procedures. This EPD will be preceded by an "I". And may or may not include the animal's own performance record for a particular trait, depending on its availability, appropriate contemporary grouping, or data edits needed for NCE.

**Accuracy (ACC)**, is the reliability that can be placed on the EPD. An accuracy of close to 1.0 indicates higher reliability. Accuracy is impacted by the number of progeny and ancestral records included in the analysis.

**\$Value Indexes**, are multi-trait selection indexes, expressed in dollars per head, to assist beef producers by adding simplicity to genetic selection decisions. The \$Value is an estimate of how future progeny of each sire are expected to perform, on average, compared to progeny of other sires in the database if the sires were randomly mated to cows and if calves were exposed to the same environment.

### Sale Terms and Conditions

Suggested\* Sale Terms and Conditions - American Angus Association - Effective February 18, 2009

UNLESS OTHERWISE EXPRESSLY STATED IN THESE SALE TERMS AND CONDITIONS OR ANY OTHER WRITTEN AGREEMENT BETWEEN THE PARTIES RELATING TO THE SALE OF ANGUS CATTLE UNDER THESE SALE TERMS AND CONDITIONS, SELLER MAKES NO OTHER WARRANTIES, EXPRESS OR IMPLIED, INCLUDING ANY IMPLIED WARRANTY OF MERCHANTABILITY OR FITNESS FOR A PARTICULAR PURPOSE, EVEN IF SUCH PURPOSE IS KNOWN TO THE PARTIES. THE REMEDIES PROVIDED IN THESE SALE TERMS AND CONDITIONS ARE THE EXCLUSIVE REMEDIES OF THE BUYER, OR ANY PARTY CLAIMING THROUGH THE BUYER, AND UNDER NO CIRCUMSTANCES WILL THE SELLER BE LIABLE FOR ANY INCIDENTAL, INDIRECT, SPECIAL, CONSEQUENTIAL, PUNITIVE OR EXEMPLARY DAMAGES UNDER ANY INDEMNITY PROVISION OR OTHERWISE.

#### TERMS OF SALE

##### Bidding

1. Each animal will be sold to the highest bidder. The person in charge will settle any disputes as to bids, and his decision on such matters will be final.

##### Announcements

1. If there is any inconsistency in the terms of any sale book, supplement sheet or day-of-sale announcement, (i) the day-of-sale announcement will control over both the supplement sheet and the sale book, and (ii) the supplement sheet will control over the sale book.

##### Cash Sale

1. All sales are for cash unless satisfactory credit arrangements, including any possible reservation of security interest by the vendor, have been made with the vendor prior to sale.

##### Buyer's risk

1. The risk of loss and injury of each animal passes to the buyer as soon as it is sold; but it is the obligation of the seller to ensure that animals are fed and cared for free of charge to the buyer until loaded for shipment or until the expiration of 48 hours after the sale, whichever occurs sooner.

##### Identification

1. The seller must ensure that each animal has a readable permanent identification mark (e.g., tattoo, hot-iron brand or freeze brand) corresponding to its registration.
2. The buyer must check all permanent identification marks for accuracy.
3. In those cases where a nickname is used by the seller, the nickname must also be accompanied by the official registered name and number of the animal.

##### Certificate of registration

1. A transferred certificate of registration must be furnished by the seller free of charge to the buyer for each animal within 45 days following the later of the date of sale and receipt of full payment.

##### Artificial insemination (AI) service certificates

1. Upon the buyer's request, AI Service Certificates must be furnished by the seller free of charge to the buyer for all females bred artificially to bulls not owned by the seller.

#### GUARANTEES

##### Health

1. Unless otherwise announced, the seller guarantees that all animals are eligible for interstate shipment as required by federal regulations.

##### Conformance with registration

1. The seller guarantees that all animals are registered under the rules of the American Angus Association.
2. The seller guarantees to the buyer that all animals conform to the registration certificate as entered in the Herd Book of the American Angus Association.

##### Pedigree

1. The seller guarantees to the buyer that the pedigree, performance data and individual genetic defect designation of the animal, as represented in any sales materials (including any sale book, supplement sheet or day-of-sale announcement), is accurate.
2. The absence of any such designation on the pedigree of an animal, in a sale book, does not establish that the animal in question is not a carrier of any such genetic defect or genetic factor.
3. In those cases where a commonly understood nickname is used by the seller, the seller guarantees the pedigree of the animal based on the commonly understood nickname.

##### Sex

1. Unless otherwise represented by the seller, there are no guarantees that offspring will be of a particular sex.

##### Breeding guarantees

1. The seller guarantees that all bulls are breeders, but only if such bulls are at least 12 months old at the time of sale and have not been allowed to run with the herd until at least 14 months of age. A bull that settles a cow by natural service and passes a fertility test made by competent veterinarians mutually agreed upon by the buyer and the seller, during any six-month period of trial (provided for in paragraph 2 of the section entitled "Options and privileges of return or adjustment") will be considered a breeder. Unless otherwise agreed by the buyer and the seller, the seller makes no guarantees with respect to the ability to freeze semen.
2. The seller guarantees that all animals are breeders, with the exception of: (a) calves under 12 months of age at the time of the sale; (b) animals shown after the sale has occurred (in such cases, the breeding guarantees, if any, will be those guarantees as agreed upon between the seller and the buyer); (c) injury or disease occurring after the sale; and (d) gross negligence or willful misconduct on the part of the buyer.
3. "Safe-in-calf" females are guaranteed by the seller to have been examined by a competent veterinarian and determined to be in calf.
4. "Served" females are not guaranteed to be in calf.
5. "Pasture-bred" females have been exposed but are not guaranteed to be in calf.
6. "Open" females have not been served and are guaranteed by the seller to be without calf.
7. Donor females:

- a. Unless otherwise agreed by the buyer and the seller, a female that has been used in an embryo transfer program is not guaranteed to be a breeder after the date of the sale.
- b. Unless otherwise agreed by the buyer and the seller, a female is not guaranteed to be a breeder after the date of the sale, when that female is to be used, or attempted to be used, in an embryo transfer program.
8. The seller makes the following guarantees with respect to all "pregnant recipients": (i) that the female is pregnant, (ii) that the resulting calf is of the pedigree represented, and (iii) that the resulting calf is of the sex represented (if so represented).

##### Semen

1. Unless otherwise agreed by the buyer and the seller, with respect to the sale of semen the seller makes no guarantees with respect to the performance or characteristics of such semen and the buyer is purchasing such semen "as is." Embryos Unless otherwise agreed by the buyer and the seller, with respect to the sale of embryos the seller makes no guarantees with respect to the performance or characteristics of such embryos and the buyer is purchasing such embryos "as is."

##### Options and privileges of return or adjustment

1. Except as provided in paragraph 2 of this section, all claims for adjustment or refund must be made in writing on or before the later of (i) six months after the sale date and (ii) the date on which the animal reaches 30 months of age.
2. All claims relating to the misrepresentation of service sire and all claims relating to paragraphs 9 and 10 of this section must be made in writing on or before the second anniversary of the date of sale.
3. If an animal is claimed to be a non-breeder, the animal may be returned to the seller if in good condition and complying with the health requirements of the seller's state. The seller is entitled to six months trial following the return of the animal in which to prove that the animal is a breeder. If at the end of the six-month period the seller is unable to prove the animal is a breeder, the seller must, at the option of the buyer, replace the animal with another of equal value or refund the purchase price. The return of the full purchase price will be deemed full satisfaction and settlement. Any expense incurred for transporting an animal claimed to be a non-breeder will be the responsibility of the buyer, except that the seller will be responsible for transportation costs in excess of the distance between the buyer's farm and the location where the sale took place. If the seller proves the animal to be a breeder, it will be the obligation of the buyer to take delivery of the animal and pay all transportation expenses.
4. If a female sold as "safe in calf" proves not to be in calf, the buyer may receive service from the bull previously used, if available. If the bull is not available, the seller must make a satisfactory adjustment on the purchase price to the buyer or, at the buyer's option, refund the purchase price upon return of the animal to the farm of the seller. Any adjustment provided for in this paragraph will absolve the seller from further liability, except in if such female proves to be a non-breeder. If a female represented as "safe in calf" to a certain bull at the time of sale proves to have been bred to a different bull, the seller must make a satisfactory adjustment on the purchase price to the buyer or, at the buyer's option, refund the purchase price upon return of the animal to the farm of the seller (adjustments will not be considered to be a breeding fee or an allocation of the purchase price to any unborn calf).
5. If a female sold as "open" proves to be with calf, the buyer may return the animal to the farm of the seller prior to calving for a refund of the full purchase price or for another animal of equal value, whichever is acceptable to the buyer. The Seller is responsible for all transportation expenses.
6. Cows with calves at their side are presumed to be breeders with no further fertility guarantee.
7. White skin or hair must not be painted or altered. If such painting or alteration has occurred, the buyer may return the animal to the farm of the seller for a refund of the full purchase price or for another animal of equal value, whichever is acceptable to the buyer.
8. If an animal (including the offspring of a pregnant recipient) is sold and at a later date proves not to have been eligible for registration under the rules of the American Angus Association, the seller must make a satisfactory adjustment on the purchase price to the buyer, or at the option of the buyer, refund the purchase price upon the return of the animal to the farm of the seller.
9. If (i) an animal is sold (including the offspring of a pregnant recipient) and through DNA-marker-typing is proven to have incorrect parentage, as represented by the certificate of registration, and for which parentage can be determined, or (ii) the resulting calf of a pregnant recipient is not of the sex represented, the seller is obligated to make a satisfactory adjustment on the purchase price to the buyer or, at the buyer's option, refund the purchase price upon the return of the animal to the farm of the seller.
10. Except as provided in paragraphs 3 and 5 of this section, all transportation expenses incurred will be the responsibility of the buyer, except that the seller will be responsible for transportation costs in excess of the distance between the buyer's farm and the location where the sale took place.

##### Retention of genetic material

1. Unless otherwise agreed in writing by the seller and the buyer, the seller will not retain any genetic material of any animal (including embryos and semen) for the purpose of cloning.

##### DISCLOSURE OF TESTS RESULTS FOR KNOWN GENETIC DEFECTS AND FACTORS

The seller shall have an affirmative duty to notify the buyer of any test results for genetic defects or genetic factors not otherwise reflected on an animal's pedigree.

##### Optional Guarantee: Genetic Defects

1. The buyer and seller may determine the scope and duration of a guarantee, if any, on an individual basis. The seller may, but is not required, to provide a guarantee to the buyer relating to genetic defects.
2. Nothing contained herein should be construed to relieve the parties from complying fully with all the rules and policies of the Association relating to genetic defects generally or individually.

##### MISCELLANEOUS

1. The above terms and conditions of sale constitute a contract between the buyer and the seller of each animal and are equally binding upon both parties. Each sale or resale of an animal constitutes a separate transaction.
2. Neither the sponsor or sponsors, the sale manager, nor any other person connected with the management of the sale, assumes any liability, legal or otherwise.
3. These sale terms and conditions and all rights, obligations and duties arising hereunder and all disputes arising hereunder will be construed in accordance with, and governed by, the laws of the state in which the sale of the animal or animals occurs, without giving effect to such state's choice of law rules.

#### C. Steer Calves

1. All resulting steer calves of currently registered carrier females or carrier bulls may be registered without submitting to testing.

### III. Currently Registered A.I. Sires Determined to be Carriers of the Mutation

A. All calves sired artificially by non-owned bulls (calves that would require an AI service certificate) shall be ineligible for registration if conceived after sixty (60) days following the date on which that sire is listed on the Association's website as a carrier of the mutation. Calves resulting from embryos conceived artificially by non-owned bulls with embryo removal dates after 67 days following the date on which that sire is listed on the Association's website as a carrier of the mutation shall be ineligible for registration.

B. The Association will publish the names and registration numbers of such sires on its website only upon receipt of a test determination from an approved laboratory.

### IV. Registration of Clones With Impacted Genetics

Clones of any animal determined to be a carrier of the mutation shall be ineligible for registration. Clones of untested animals with the impacted genetics shall also be ineligible for registration.

### V. Testing of Animals

A. Testing to determine whether an animal is a carrier of the mutation or is free of it shall be conducted at those laboratories approved by the Association.

B. The results of such testing shall be provided to the Association and the submitting member as soon as practicable after the test results are available.

VI. Publication of Test Results by the Association Upon receipt of a test result from an approved laboratory that determines whether an animal is a carrier of the mutation or free of it, the Association shall list the name, registration number and test result of each such animal on its website. The Association shall also maintain an updated list of each animal determined to be a carrier as well as those who have tested free of such defect. Upon request, the Director of Member Services shall provide such a list at no cost to the requesting member.

### VII. Right to Request a Second DNA Test

In those instances in which an animal previously registered or seeking registration is tested and determined to be a carrier of the mutation (and is identified as such on the Association's website), the member owner of record may request that an approved laboratory conduct a second DNA test on a sample from such animal. In order to process a request for a second test, the member owner of record must provide materials or samples sufficient to permit the laboratory to verify the parentage of the animal in question.

### VIII. Notations on Registration and Performance Pedigree Certificates

A. Upon receipt of a test result from an approved laboratory, the Association shall place or electronically display the letter designation(s) "AMF" or "NHF" on the registration and performance pedigree certificates of any animal that has been determined by such a test to be free of the mutation. **AMF** shall mean "Arthrogryposis Multiplex – Free", or that an animal is free of the mutation. **NHF** shall mean "Neuropathic Hydrocephalus – Free".

B. Upon receipt of a test result from an approved laboratory, the Association shall place or electronically display the letter designation(s) "AMC" or "NHC" on the registration and performance pedigree certificates of any animal that has been determined by such test to be a carrier of the mutation.

**AMC** shall mean "Arthrogryposis Multiplex – Carrier", or that the animal is a carrier of the mutation. **NHC** shall mean "Neuropathic Hydrocephalus – Carrier".

C. Seven months following the availability of a commercial test for the mutation (at commercial laboratories approved by the Association), the Association shall place or electronically display the following notation on the registration and performance pedigree certificates of all registered animals that descend from an animal determined to be a carrier of the mutation, unless an intervening AMF or NHF status eliminates all genetic ties to a known carrier ancestor.

*This animal has one or more ancestors known to carry a mutation that can result in calves with a genetic defect known as Arthrogryposis Multiplex (AM), or if applicable, Neuropathic Hydrocephalus (NH). The American Angus Association recommends DNA testing at an approved laboratory to confirm the absence or presence of the mutation.*

Such notification will remain in place until the Association receives an official determination from an approved laboratory that the particular animal tested as a carrier of the mutation or free of it, in which case its certificates will be denoted pursuant to Sections VIII.A and B of these procedures.

NOTE: These procedures apply only to Arthrogryposis Multiplex and Neuropathic Hydrocephalus.

### Policy Regarding Specific Genetic Defects and Genetic Factors

*Rules 300 to 307 set forth the Genetic Defects Policy of the American Angus Association and those rules relating to it. Rule 350GF relates to Genetic Factors. Please refer to this policy and set of rules for more information as well as for definitions of genetics defects recognized by the Association.*

*The abnormalities listed there are considered pathological (disease) conditions of genetic origin. These "genetic defects" include an impairment of health or a condition of abnormal function due to an abnormal or mutated gene.*

*In instances in which a reliable DNA test has been developed and approved by the Association that conclusively identifies and separates carriers of a recognized genetic defect from those free of the same defect, Rule 307 delegates to the Board the discretion to develop, establish and implement a policy tailored to address the circumstances of a particular situation.*

*Set forth below is the American Angus Association's policy relating to arthrogryposis multiplex (AM) and neuropathic hydrocephalus (NH).*

*Members with questions regarding the following policy or the Genetic Defects Policy or Related Rules in general should contact Member Services for clarification.*

### Policy of the American Angus Association relating to the registration Status of Potential and Known Carriers of Arthrogryposis Multiplex and Neuropathic Hydrocephalus.

#### Preface

Pursuant to Rule 307 of the Rules of the American Angus Association (hereinafter "the Association"), the Board of Directors hereby adopts the following policy regarding the following two separate genetic defects: Arthrogryposis Multiplex (hereinafter "AM") and Neuropathic Hydrocephalus (hereinafter "NH"). AM was recognized as a genetic defect on November 15, 2008, the same date on which the Board adopted its initial policy related to that abnormality. NH was recognized as a genetic defect on June 12, 2009. On that same date, the Board revised the initial AM policy (1) to amend Section II of that initial policy as it related to AM and (2) to make the procedures that follow, unless stated otherwise, applicable to both AM and NH.

#### The Impacted Genetics

For the purposes of the procedures that follow, the phrase "the impacted genetics", as it references the AM mutation, currently refers to all animals with Rito 9J9 of B1567T26, Registration No. 9682589, in their pedigrees. As it refers to the NH mutation, the phrase currently refers to all animals with GAR Precision 1680, Registration No. 11520398, in their pedigrees. These currently identified references do not preclude other ancestors of these bulls from potentially being identified as carriers at a later time.

#### Procedures

The following procedures shall be followed in connection with the registration status of potential and known carriers of AM and NH:

#### I. Status of Currently Registered Females and Bulls

- As used herein, the word "currently" in the phrase "currently registered" shall mean that date on which laboratories approved by the Association shall begin to provide a commercial DNA test for the mutation to the membership. Such date(s) will be published on the Association's website. *Note: With respect to AM, that date was January 1, 2009. With respect to NH, that date was June 15, 2009.*
- All currently registered females and bulls with the impacted genetics in their pedigrees shall remain registered. In other words, their registrations will not be revoked, cancelled or suspended.
- All currently registered females and bulls with the impacted genetics in their pedigrees that are tested and determined to be carriers of the mutation shall remain registered.

#### II. Resulting Progeny of Carrier Females and Bulls

##### A. Heifer Calves

1. All resulting heifer calves of currently registered carrier females or carrier bulls, born within three years of the date on which an Association approved commercialized test is available, must be DNA tested for the mutation recognized under this policy at a laboratory authorized by the Association in order to be eligible for registration. The results of such test (reflecting whether the heifer calf so tested is a carrier of the mutation or free of it) shall be denoted on that animal's registration and performance certificates in the manner prescribed below.

*Note: With respect to AM, that date is December 31, 2011. With respect to NH, that date is June 14, 2012.*

2. All resulting heifer calves of registered carrier females or carrier bulls, born after three years of the date on which an Association approved commercialized test is available, must be DNA tested for the mutation recognized under this policy at a laboratory authorized by the Association and found to be free of that mutation in order to be eligible for registration.

*Note: With respect to AM, that date is January 1, 2012. With respect to NH, that date is June 15, 2012.*

##### B. Bull Calves

1. All resulting bull calves of currently registered carrier females or carrier bulls, born within one year of the date on which an Association approved commercialized test is available, must be DNA tested for the mutation recognized under this policy at a laboratory authorized by the Association in order to be eligible for registration. The results of such test (reflecting whether the bull calf tested is a carrier of the mutation or free of it) shall be denoted on that animal's registration and performance certificates in the manner prescribed below.

*Note: With respect to AM, that date is December 31, 2009. With respect to NH, that date is June 14, 2010.*

2. All resulting bull calves of registered carrier females or carrier bulls, born after one year of the date on which an Association approved commercialized test is available, must be DNA tested for the mutation recognized under this policy at a laboratory authorized by the Association and found to be free of that mutation in order to be eligible for registration.

*Note: With respect to AM, that date is December 31, 2009. With respect to NH, that date is June 14, 2010.*



Quality in Breeding  
Angus!

### A\*L\*O\*T Angus Association

909 West US Hwy. 82  
New Boston, TX 75570

Phone/Fax: 903-667-5581

E-mail: [alot@alotangus.org](mailto:alot@alotangus.org)



★ Titus County Livestock Pavilion, Mt. Pleasant, TX

